

Supplier's Product Code :  
Product Added :  
Last Updated by Supplier :  
erudus id :

10937  
13 January 2026  
28 January 2026  
bff19bfa743c46bfa0e44d170e502aff



The information on the **Erudus System** has been supplied by the manufacturers of the products and, whilst the owners of the Erudus System take steps to ensure the information is regularly updated, they give no warranty and no guarantee that the information is accurate. Product information and ingredients may change, please always read product labels carefully in addition to using the information provided by Erudus One.

We do not accept liability for any inaccuracies or incorrect information contained on this site. Please visit <http://www.erudus.com/terms-and-conditions> for full terms and conditions.

## 34 HALF-MOON 100g, pre-sliced, baked, deep-frozen

Short Product Name:

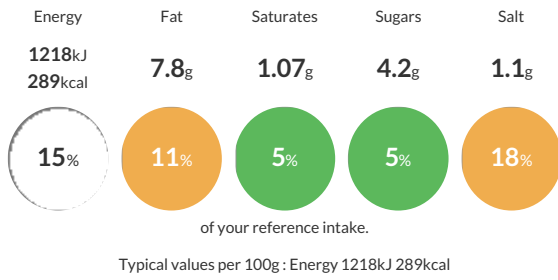
HALF-MOON 100g, baked, pre-sliced

NA

Traded Unit GTIN: **3516870109370** Internal GTIN: Supplier: **Planete Pain** Suppliers Product Code: **10937**

### Reference Intake

Each 100g portion contains:



### Nutritional Information

Typical Values	Per 100g
Energy	1218kJ 289kCal
Carbohydrates	46.7g
of which sugars	4.2g
Fat	7.8g
of which saturates	1.07g
Fibre	3.1g
Protein	7.1g
Salt	1.1g

### Allergy Information

Key: **Contains** **May Contain**



### Dietary Information

Key: **Suitable for**



### Ingredients

WHEAT flour, water, potato flakes, sunflower oil, olive oil, yeast, salt, **WHEAT GLUTEN**, rosemary, sugar, malted WHEAT flour.