

The information on the [Erudus System](#) has been supplied by the manufacturers of the products and, whilst the owners of the Erudus System take steps to ensure the information is regularly updated, they give no warranty and no guarantee that the information is accurate. Product information and ingredients may change, please always read product labels carefully in addition to using the information provided by Erudus One.

We do not accept liability for any inaccuracies or incorrect information contained on this site. Please visit <http://www.erudus.com/terms-and-conditions> for full terms and conditions.

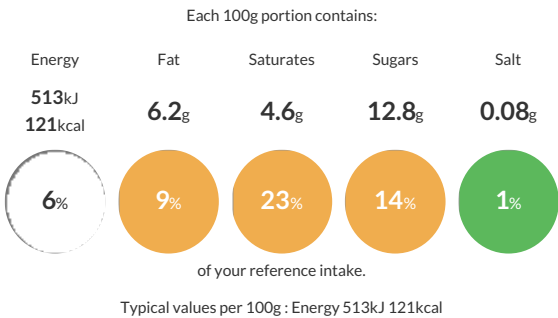
## Mint Choc Chip : 4 x 5 Litre Sept 25

Short Product Name:  
Mint Choc Chip Ice Cream

Mint Choc Chip Ice Cream - A naturally flavoured, refreshing mint Ice Cream scattered with choc chips.

Traded Unit GTIN: 5060016671354 Internal GTIN: 5060016671347 Supplier : Yorvale Ltd Suppliers Product Code : MCC4x5

### Reference Intake



### Nutritional Information


Typical Values	Per 100g
Energy	513kJ 121kCal
Carbohydrates	14g
of which sugars	12.8g
Fat	6.2g
of which saturates	4.6g
Fibre	0.3g
Protein	2.3g
Salt	0.08g

### Allergy Information

Key: Contains May Contain

  
Does Not Contain Cereal/Gluten


  
Contains Milk

  
Does Not Contain Eggs

  
Does Not Contain Peanuts

  
May Contain Nuts

  
Does Not Contain Crustaceans

  
Does Not Contain Mustard


  
Does Not Contain Fish

  
Does Not Contain Lupin

  
Does Not Contain Sesame

  
Does Not Contain Celery

  
Does Not Contain Soya

  
Does Not Contain Molluscs

  
Does Not Contain Sulphur Dioxide

### Dietary Information

Key: Suitable for

  
Suitable for Vegetarian

  
May not be suitable for Vegan

  
May not be suitable for Kosher

  
May not be suitable for Halal

  
NO DATA for Coeliac

**Allergen Statement**  
This product has been produced in a factory that uses nut ingredients.

### Ingredients

Whole MILK, Double Cream (MILK), Sugar, Choc Chips (8.7%) (Sugar, Hydrogenated Vegetable Oil (Palm Kernel), Fat-Reduced Cocoa Powder, Modified Maize Starch, Emulsifier: Lecithins, Flavour), Skimmed MILK Powder, Glucose Syrup, Emulsifier: Mono and Diglycerides of Fatty Acids, Stabilisers: Locust Bean Gum, Guar Gum, Carageenan, Natural Flavouring, Natural Green Colouring.