

The information on the [Erudus System](#) has been supplied by the manufacturers of the products and, whilst the owners of the Erudus System take steps to ensure the information is regularly updated, they give no warranty and no guarantee that the information is accurate. Product information and ingredients may change, please always read product labels carefully in addition to using the information provided by Erudus One.

We do not accept liability for any inaccuracies or incorrect information contained on this site. Please visit <http://www.erudus.com/terms-and-conditions> for full terms and conditions.

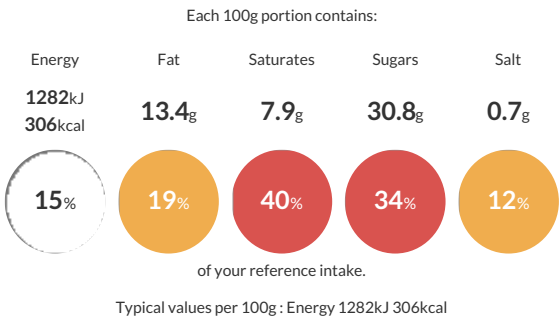
Sticky Toffee Puding Squares x16

Short Product Name:
Sticky Toffee Puding

Sponge Squares with a toffee sauce topping. Pe-cut into 16 portions

Traded Unit GTIN: 5016467003305 Internal GTIN: Supplier: Aulds Delicious Desserts Ltd Suppliers Product Code : PD5N

Reference Intake



Nutritional Information

Typical Values	Per 100g
Energy	1282kJ 306kCal
Carbohydrates	41.8g
of which sugars	30.8g
Fat	13.4g
of which saturates	7.9g
Fibre	1.5g
Protein	3.7g
Salt	0.7g

Allergy Information

Key: Contains May Contain


Contains Cereal/Gluten


Contains Milk



Contains Eggs


May Contain Peanuts


May Contain Nuts


Does Not Contain Crustaceans


Does Not Contain Mustard


Does Not Contain Fish


Does Not Contain Lupin


Does Not Contain Sesame


Does Not Contain Celery


May Contain Soya


Does Not Contain Molluscs


Does Not Contain Sulphur Dioxide

Dietary Information

Key: Suitable for


Suitable for Vegetarian


May not be suitable for Vegan


May not be suitable for Kosher


May not be suitable for Halal


NO DATA for Coeliac

Ingredients

Water, Sugar, Fortified **WHEAT** Flour (**WHEAT** Flour, Calcium Carbonate, Iron, Niacin, Thiamin), Dates (15%), Dairy Cream (**MILK**), Pasteurised Whole **EGG**, Butter (**MILK**), Golden Syrup, Raising Agents (E450i, E500ii), Palm Oil, Modified Maize Starch, Black Treacle, Flavourings, Caramelised Sugar Syrup, Emsulfiers (E475, E471).