

The information on the [Erudus System](#) has been supplied by the manufacturers of the products and, whilst the owners of the Erudus System take steps to ensure the information is regularly updated, they give no warranty and no guarantee that the information is accurate. Product information and ingredients may change, please always read product labels carefully in addition to using the information provided by Erudus One.

We do not accept liability for any inaccuracies or incorrect information contained on this site. Please visit <http://www.erudus.com/terms-and-conditions> for full terms and conditions.

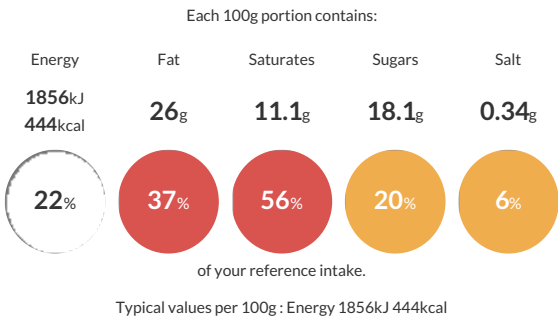
Schulstad Royal Danish Selection - Cinnamon Swirl

Short Product Name:
Schulstad Royal Danish Selection

A selection of 3 Danish pastries: Cinnamon Swirl, Vanilla Crown and Apricot Crown. Case contains 3 bags, each bag contains 12 pastries, total 36 pastries per case. Includes 2 x135g icing bags

Traded Unit GTIN: **05701536805118** Internal GTIN: Supplier : **Lantmannen Unibake** Suppliers Product Code : **80511**

Reference Intake



Nutritional Information

Typical Values	Per 100g
Energy	1856kJ 444kCal
Carbohydrates	46.5g
of which sugars	18.1g
Fat	26g
of which saturates	11.1g
Fibre	0.8g
Protein	5.7g
Salt	0.34g

Allergy Information

Key: **Contains** **May Contain**


Contains Cereal/Gluten


Contains Milk


Contains Eggs


Does Not Contain Peanuts


May Contain Nuts


Does Not Contain Crustaceans


Does Not Contain Mustard


Does Not Contain Fish


Does Not Contain Lupin


Does Not Contain Sesame


Does Not Contain Celery


Does Not Contain Soya


Does Not Contain Molluscs


Does Not Contain Sulphur Dioxide

Dietary Information

Key: **Suitable for**


Suitable for Vegetarian


May not be suitable for Vegan


May not be suitable for Kosher


Suitable for Halal


NO DATA for Coeliac

Allergen Statement
For allergens, including cereals containing gluten, see ingredients highlighted in bold. May also contain traces of other nuts. May contain Apricot kernels.

Ingredients

DOUGH: **Wheat** Flour (with Calcium, Folic Acid, Iron, Niacin, Thiamin), Vegetable Margarine (Palm Oil, Rapeseed Oil, Water, Emulsifier (E471), Salt, Acidity Regulator (E330), Flavouring), Water, Yeast, Egg (**Egg**, Salt), Sugar, Improver (**Wheat** Flour (with Calcium, Folic Acid, Iron, Niacin, Thiamin), Flour Treatment Agent (E300)). **FILLING:** Vegetable Margarine (Palm Oil, Rapeseed Oil, Water, Coconut Oil, Salt, Emulsifier (E471), Acidity Regulator (E330), Flavouring), Sugar, Water, Custard Powder (Sugar, Modified Potato Starch, Whey Powder (**Milk**), Skimmed **Milk** Powder, Coconut Oil, Stabilisers (E404, E450iii, E339ii, E451i), Glucose Syrup, Flavouring, Colour (E160aiii), Salt, **Milk** Protein), Sugar Syrup, Cinnamon (0.5%), **Wheat** Flour (with Calcium, Folic Acid, Iron, Niacin, Thiamin), Cane Sugar Syrup. **TOPPING:** Glaze (Water, Stabiliser (E953), Sugar, Gelling Agent (E406), Acidity Regulator (E330), Preservative (E202)).
ICING: Sugar, Water, Glucose Syrup.

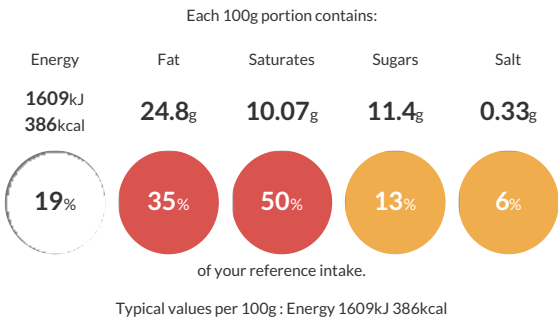
Schulstad Royal Danish Selection - Vanilla Creme Crown

Short Product Name:
Schulstad Royal Danish Selection

A selection of 3 Danish pastries: Cinnamon Swirl, Vanilla Crown and Apricot Crown. Case contains 3 bags, each bag contains 12 pastries, total 36 pastries per case. Includes 2 x135g icing bags

Traded Unit GTIN: 05701536805118 Internal GTIN: Supplier : Lantmannen Unibake Suppliers Product Code : 80511

Reference Intake



Nutritional Information

Typical Values	Per 100g
Energy	1609kJ 386kCal
Carbohydrates	35g
of which sugars	11.4g
Fat	24.8g
of which saturates	10.07g
Fibre	1.6g
Protein	4.9g
Salt	0.33g

Allergy Information

Key: Contains May Contain

Dietary Information

Key: Suitable for

Allergen Statement
For allergens, including cereals containing gluten, see ingredients highlighted in bold. May also contain traces of other nuts. May contain Apricot kernels.

Ingredients

DOUGH: Wheat Flour (with Calcium, Folic Acid, Iron, Niacin, Thiamin), Vegetable Margarine (Palm Oil, Rapeseed Oil, Water, Emulsifier (E471), Salt, Acidity Regulator (E330), Flavouring), Water, Yeast, Egg (Egg, Salt), Sugar, Wheat Gluten, Improver (Wheat Flour (with Calcium, Folic Acid, Iron, Niacin, Thiamin), Flour Treatment Agent (E300)), Stabiliser (E417). **FILLING:** Water, Custard Powder (4.5%) (Sugar, Modified Potato Starch, Whey Powder (Milk), Skimmed Milk Powder, Coconut Oil, Stabilisers (E404, E450iii, E339ii, E451i), Glucose Syrup, Flavouring, Salt, Milk Protein, Colour (E160aiii), Sugar, Vegetable Margarine (Palm Oil, Rapeseed Oil, Water, Coconut Oil, Salt, Emulsifier (E471), Acidity Regulator (E330), Flavouring), Wheat Flour (with Calcium, Folic Acid, Iron, Niacin, Thiamin), Almond Powder, Flavouring. **TOPPING:** Glaze (Water, Stabiliser (E953), Sugar, Gelling Agent (E406), Acidity Regulator (E330), Preservative (E202)), Hazelnuts. **ICING:** Sugar, Water, Glucose Syrup.

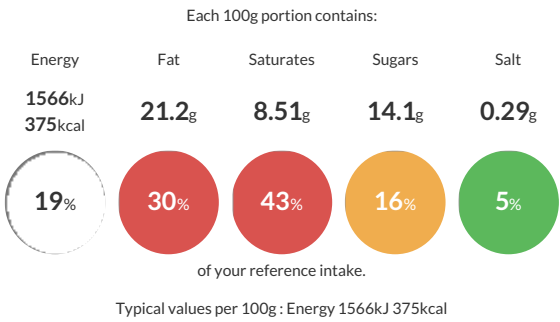
Schulstad Royal Danish Selection - Apricot Crown

Short Product Name:
Schulstad Royal Danish Selection

A selection of 3 Danish pastries: Cinnamon Swirl, Vanilla Crown and Apricot Crown. Case contains 3 bags, each bag contains 12 pastries, total 36 pastries per case. Includes 2 x135g icing bags

Traded Unit GTIN: 05701536805118 Internal GTIN: Supplier: Lantmannen Unibake Suppliers Product Code: 80511

Reference Intake



Nutritional Information

Typical Values	Per 100g
Energy	1566kJ 375kCal
Carbohydrates	40.7g
of which sugars	14.1g
Fat	21.2g
of which saturates	8.51g
Fibre	1.2g
Protein	4.7g
Salt	0.29g

Allergy Information

Key: Contains May Contain

Dietary Information

Key: Suitable for

Allergen Statement
For allergens, including cereals containing gluten, see ingredients highlighted in bold. May also contain traces of other nuts. May contain Apricot kernels.

Ingredients

DOUGH: Wheat Flour (with Calcium, Folic Acid, Iron, Niacin, Thiamin), Vegetable Margarine (Palm Oil, Rapeseed Oil, Water, Emulsifier (E471), Salt, Acidity Regulator (E330), Flavouring), Water, Yeast, Egg (Egg, Salt), Sugar, Wheat Gluten, Improver (Wheat Flour (with Calcium, Folic Acid, Iron, Niacin, Thiamin), Flour Treatment Agent (E300)), Stabiliser (E417). **FILLING:** Apricot Filling (22.3%) (Apricot Pulp, Apricot Puree, Apricot Concentrate, Sugar, Glucose Syrup, Water, Thickener (E1422), Gelling Agent (E406), Flavouring, Salt, Elderberry Concentrate, Acidity Regulator (E330), Preservative (E202)), Sugar, Vegetable Margarine (Palm Oil, Rapeseed Oil, Water, Coconut Oil, Salt, Emulsifier (E471), Acidity Regulator (E330), Flavouring), Water, Wheat Flour (with Calcium, Folic Acid, Iron, Niacin, Thiamin), Almond Powder, Flavouring. **TOPPING:** Glaze (Water, Stabiliser (E953), Sugar, Gelling Agent (E406), Acidity Regulator (E330), Preservative (E202)).

ICING: Sugar, Water, Glucose Syrup.