

The information on the [Erudus System](#) has been supplied by the manufacturers of the products and, whilst the owners of the Erudus System take steps to ensure the information is regularly updated, they give no warranty and no guarantee that the information is accurate. Product information and ingredients may change, please always read product labels carefully in addition to using the information provided by Erudus One.

We do not accept liability for any inaccuracies or incorrect information contained on this site. Please visit <http://www.erudus.com/terms-and-conditions> for full terms and conditions.

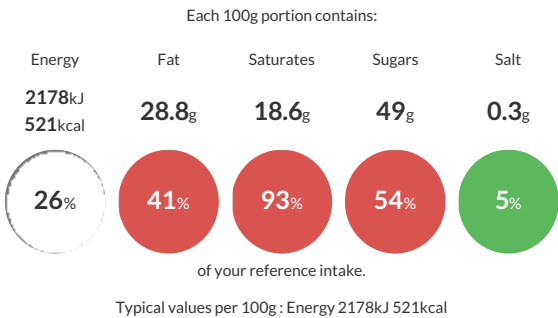
TOFFEE CRISP 24x38g

Short Product Name:
Toffee Crisp Milk Chocolate Bar 38g

Toffee (23%) and crisped cereal (12%) filled milk chocolate. Milk chocolate contains milk solids 14% minimum and vegetable fat in addition to cocoa butter.

Traded Unit GTIN: 8445290357717 Internal GTIN: 8445290357700 Supplier : Nestle UK Suppliers Product Code : 12523733

Reference Intake



Nutritional Information

Typical Values	Per 100g
Energy	2178kJ 521kCal
Carbohydrates	60.3g
of which sugars	49g
Fat	28.8g
of which saturates	18.6g
Fibre	1.4g
Protein	4.3g
Salt	0.3g

Allergy Information

Key: Contains May Contain


Contains Cereal/Gluten


Contains Milk


Does Not Contain Eggs


May Contain Peanuts


May Contain Nuts


Does Not Contain Crustaceans


Does Not Contain Mustard


Does Not Contain Fish


Does Not Contain Lupin


Does Not Contain Sesame


Does Not Contain Celery


May Contain Soya


Does Not Contain Molluscs


Does Not Contain Sulphur Dioxide

Dietary Information

Key: Suitable for


Suitable for Vegetarian


May not be suitable for Vegan


May not be suitable for Kosher


May not be suitable for Halal


May not be suitable for Coeliac

Allergen Statement
Contains: MILK , WHEAT and BARLEY GLUTEN. May contain PEANUTS, TREE NUTS and SOYA.

Ingredients

sugar, vegetable fats (palm, coconut, shea, sunflower), glucose fructose syrup, rice flour, sweetened condensed MILK (MILK, sugar), whey powder product (MILK), cocoa butter, dried whole MILK, cocoa mass, WHEAT flour, fat-reduced cocoa powder, malted BARLEY flour, anti-caking agent (potato starch), emulsifier (lecithins), salt, firming agent (calcium carbonate), flavouring.