

The information on the [Erudus System](#) has been supplied by the manufacturers of the products and, whilst the owners of the Erudus System take steps to ensure the information is regularly updated, they give no warranty and no guarantee that the information is accurate. Product information and ingredients may change, please always read product labels carefully in addition to using the information provided by Erudus One.

We do not accept liability for any inaccuracies or incorrect information contained on this site. Please visit <http://www.erudus.com/terms-and-conditions> for full terms and conditions.

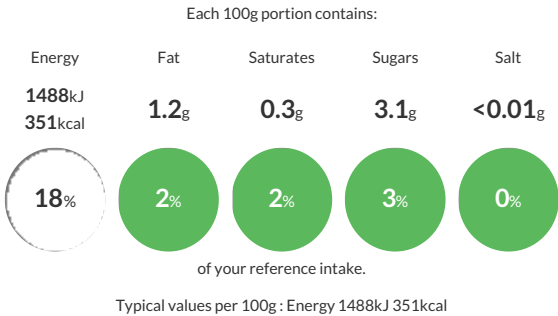
Pasta Liguori Orecchiette LE SPECIALI #121 12x500 g

Short Product Name:
Liguori Orecchiette #121 500g

Pasta made with 100% Italian durum wheat (according to Presidential Decree 187/2001)

Traded Unit GTIN: 18008912013162 Internal GTIN: 8008912013165 Supplier : Bonta Italia Ltd Suppliers Product Code : PL186048

Reference Intake



Nutritional Information

Typical Values	Per 100g
Energy	1488kJ 351kCal
Carbohydrates	69g
of which sugars	3.1g
Fat	1.2g
of which saturates	0.3g
Fibre	3g
Protein	14.5g
Salt	<0.01g

Allergy Information

Key: Contains May Contain



Contains Cereal/Gluten



Does Not Contain Milk



Does Not Contain Eggs



Does Not Contain Peanuts



Does Not Contain Nuts



Does Not Contain Crustaceans



May Contain Mustard



Does Not Contain Fish



Does Not Contain Lupin



Does Not Contain Sesame



Does Not Contain Celery



Does Not Contain Soya



Does Not Contain Molluscs



Does Not Contain Sulphur Dioxide

Allergen Statement
May also contain **MUSTARD**.

Ingredients

Durum **WHEAT** semolina, Water

Dietary Information

Key: Suitable for



Suitable for Vegetarian



Suitable for Vegan



Suitable for Kosher



Suitable for Halal



May not be suitable for Coeliac