

The information on the [Erudus System](#) has been supplied by the manufacturers of the products and, whilst the owners of the Erudus System take steps to ensure the information is regularly updated, they give no warranty and no guarantee that the information is accurate. Product information and ingredients may change, please always read product labels carefully in addition to using the information provided by Erudus One.

We do not accept liability for any inaccuracies or incorrect information contained on this site. Please visit <http://www.erudus.com/terms-and-conditions> for full terms and conditions.

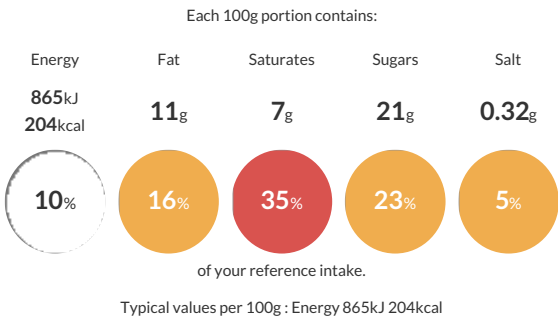
Ben & Jerry's Cone Together (12x100ml)

Short Product Name:  
Cone Together Tub

Vanilla dairy ice cream with chocolatey coated waffle cone pieces (13%) & a salted caramel swirl (13%)

Traded Unit GTIN: 8711327386983 Internal GTIN: 8711327386945 Supplier : Unilever Suppliers Product Code : 68143848

Reference Intake



Nutritional Information

Typical Values	Per 100g
Energy	865kJ 204kCal
Carbohydrates	23g
of which sugars	21g
Fat	11g
of which saturates	7g
Fibre	-g
Protein	3.1g
Salt	0.32g

Allergy Information

Key: Contains May Contain

  
Contains  
Cereal/Gluten

  
Contains  
Milk

  
Contains  
Eggs

  
Does Not  
Contain  
Peanuts

  
May Contain  
Nuts

  
Does Not  
Contain  
Crustaceans

  
Does Not  
Contain  
Mustard

  
Does Not  
Contain  
Fish

  
Does Not  
Contain  
Lupin

  
Does Not  
Contain  
Sesame

  
Does Not  
Contain  
Celery

  
Contains  
Soya

  
Does Not  
Contain  
Molluscs

  
Does Not  
Contain  
Sulphur  
Dioxide


Allergen Statement  
May contain almond, hazelnut and walnut.


Ingredients

Ingredients: Cream (MILK) (26%), sugar, water, condensed skimmed MILK, glucose syrup, free range EGG yolk, WHEAT flour, cocoa butter, whole MILK powder, butter (MILK), cocoa mass, salt, vanilla extract, vegetable oils (sunflower, rapeseed), skimmed MILK powder, stabilisers (pectin, guar gum, carrageenan), cocoa powder, lactose(MILK), BARLEY malt extract, MILK protein, natural vanilla flavouring, emulsifier (SOY lecithin), raising agent (sodium carbonates).


Dietary Information


Key: Suitable for

  
Suitable for  
Vegetarian

  
May not be  
suitable for  
Vegan

  
Suitable for  
Kosher

  
Suitable for  
Halal

  
May not be  
suitable for  
Coeliac