

The information on the [Erudus System](#) has been supplied by the manufacturers of the products and, whilst the owners of the Erudus System take steps to ensure the information is regularly updated, they give no warranty and no guarantee that the information is accurate. Product information and ingredients may change, please always read product labels carefully in addition to using the information provided by Erudus One.

We do not accept liability for any inaccuracies or incorrect information contained on this site. Please visit <http://www.erudus.com/terms-and-conditions> for full terms and conditions.

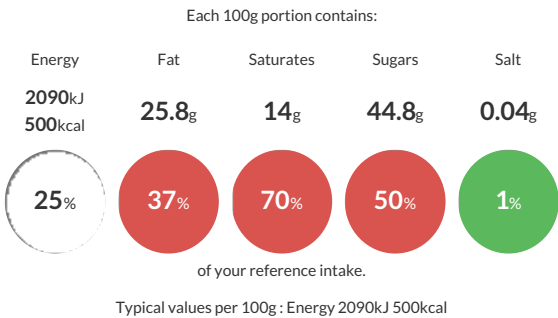
KIT KAT 4 Finger Dark 24x41.5g

Short Product Name:  
Kit Kat 4 Finger Dark Chocolate Bar 41.5g

Four crispy wafer fingers covered with dark chocolate (66%).

Traded Unit GTIN: 8445290554215 Internal GTIN: 8445290553409 Supplier : Nestle UK Suppliers Product Code : 12535660

Reference Intake



Nutritional Information

Typical Values	Per 100g
Energy	2090kJ 500kCal
Carbohydrates	58.6g
of which sugars	44.8g
Fat	25.8g
of which saturates	14g
Fibre	5.5g
Protein	5.6g
Salt	0.04g

Allergy Information

Key: Contains May Contain

  
Contains  
Cereal/Gluten

  
Contains  
Milk

  
Does Not  
Contain  
Eggs

  
May Contain  
Peanuts

  
May Contain  
Nuts

  
Does Not  
Contain  
Crustaceans

  
Does Not  
Contain  
Mustard

  
Does Not  
Contain  
Fish

  
Does Not  
Contain  
Lupin

  
Does Not  
Contain  
Sesame

  
Does Not  
Contain  
Celery

  
Does Not  
Contain  
Soya

  
Does Not  
Contain  
Molluscs

  
Does Not  
Contain  
Sulphur  
Dioxide

Dietary Information

Key: Suitable for

  
Suitable for  
Vegetarian

  
May not be  
suitable for  
Vegan

  
May not be  
suitable for  
Kosher

  
May not be  
suitable for  
Halal

  
May not be  
suitable for  
Coeliac

Allergen Statement  
Contain **WHEAT** and **MILK**. May contain **PEANUTS** and **TREE NUTS**.

Ingredients

sugar, cocoa mass, **WHEAT** flour (contains calcium, iron, thiamin and niacin), vegetable fats (palm, shea, mango kernel, sal), cocoa butter, butterfat (**MILK**), emulsifier (lecithins), dried whole **MILK**, skimmed **MILK** powders, yeast, raising agent (sodium bicarbonate), whey powder product (**MILK**), whey powder (**MILK**), natural flavourings.