

Supplier's Product Code :  
Product Added :  
Last Updated by Supplier :  
erudus id :

IT045  
24 March 2026  
24 March 2026  
c602839f76dc4696bcf12bb1fb218ea8



The information on the [Erudus System](#) has been supplied by the manufacturers of the products and, whilst the owners of the Erudus System take steps to ensure the information is regularly updated, they give no warranty and no guarantee that the information is accurate. Product information and ingredients may change, please always read product labels carefully in addition to using the information provided by Erudus One.

We do not accept liability for any inaccuracies or incorrect information contained on this site. Please visit <http://www.erudus.com/terms-and-conditions> for full terms and conditions.

## MOZZARELLA BLOCK GALBANI 1KG

Short Product Name:

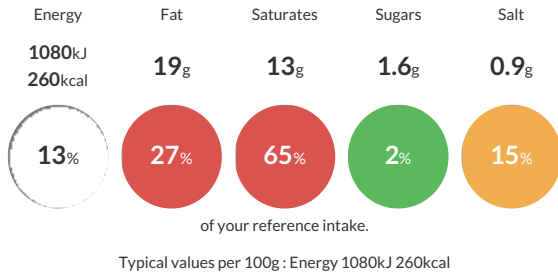
Soft cheese made with pasteurised cows milk

Soft cheese made from pasteurised Cow's milk

Traded Unit GTIN: **08000430913231** Internal GTIN: **8000430131574** Supplier: **Cheese Cellar (Harvey & Brockless)** Suppliers Product Code: **IT045**

### Reference Intake

Each 100g portion contains:



### Nutritional Information

Typical Values	Per 100g
Energy	1080kJ 260kCal
Carbohydrates	2.2g
of which sugars	1.6g
Fat	19g
of which saturates	13g
Fibre	0g
Protein	19g
Salt	0.9g

### Allergy Information

Key: **Contains** **May Contain**



#### Gluten Claim

Gluten content is less than 20ppm.

#### Allergen Statement

N/A

### Ingredients

Pasteurised Cow's MILK, Salt, Microbial Rennet, Acidity Regulator [Citric Acid]

### Dietary Information

Key: **Suitable for**

