

The information on the [Erudus System](#) has been supplied by the manufacturers of the products and, whilst the owners of the Erudus System take steps to ensure the information is regularly updated, they give no warranty and no guarantee that the information is accurate. Product information and ingredients may change, please always read product labels carefully in addition to using the information provided by Erudus One.

We do not accept liability for any inaccuracies or incorrect information contained on this site. Please visit <http://www.erudus.com/terms-and-conditions> for full terms and conditions.

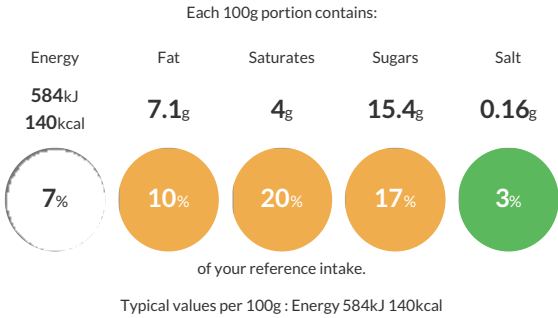
Judes Caramel Pecan Ice Cream - 24 x 100mls

Short Product Name:

Judes Caramel Pecan Ice Cream

Traded Unit GTIN: 05060081111588 Internal GTIN: 5060081112509 Supplier: Judes Ices Suppliers Product Code : BRP12

Reference Intake



Nutritional Information

| Typical Values | Per 100g |
|--------------------|------------------|
| Energy | 584kJ 140kCal |
| Carbohydrates | 16g |
| of which sugars | 15.4g |
| Fat | 7.1g |
| of which saturates | 4g |
| Fibre | -g |
| Protein | 2.8g |
| Salt | 0.16g |

Allergy Information

Key: Contains May Contain


Does Not Contain Cereal/Gluten


Contains Milk


Contains Eggs


May Contain Peanuts


Contains Nuts


Does Not Contain Crustaceans


Does Not Contain Mustard


Does Not Contain Fish


Does Not Contain Lupin


Does Not Contain Sesame


Does Not Contain Celery


Does Not Contain Soya


Does Not Contain Molluscs


Does Not Contain Sulphur Dioxide

Dietary Information

Key: Suitable for


Suitable for Vegetarian


May not be suitable for Vegan


May not be suitable for Kosher


May not be suitable for Halal


May not be suitable for Coeliac

Allergen Statement
For allergens see ingredients in bold. May contain traces of other nuts and peanuts.

Ingredients

fresh whole **MILK** (56%), caramel (10%) [sweetened condensed skimmed **MILK**, sugar, water, glucose syrup, **BUTTER**], demerara sugar, caramelised **PECAN NUTS** (4%) [sugar, **PECAN** pieces (**NUTS**), glucose syrup solution, sweetcream butter (**MILK**), salt] brown **BUTTER**, skimmed **MILK** powder, fresh double **CREAM** (3%), pasteurised free range **EGG** yolk, dextrose, stabilisers: locust bean gum and guar gum, salt.