

The information on the [Erudus System](#) has been supplied by the manufacturers of the products and, whilst the owners of the Erudus System take steps to ensure the information is regularly updated, they give no warranty and no guarantee that the information is accurate. Product information and ingredients may change, please always read product labels carefully in addition to using the information provided by Erudus One.

We do not accept liability for any inaccuracies or incorrect information contained on this site. Please visit <http://www.erudus.com/terms-and-conditions> for full terms and conditions.

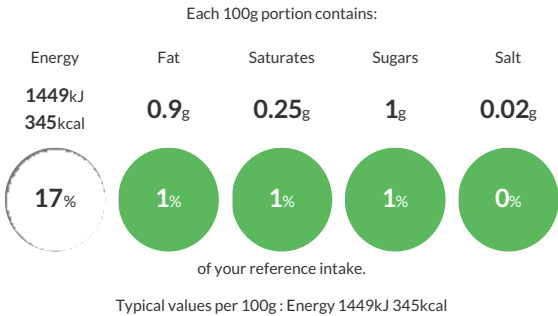
Cambray Spaghetti 4x3kg

Short Product Name:  
Spaghetti

Spaghetti Pasta

Traded Unit GTIN: 5060202773497 Internal GTIN: 5060202773480 Supplier : BW Catering Products Suppliers Product Code : PT04

Reference Intake



Nutritional Information

| Typical Values     | Per 100g          |
|--------------------|-------------------|
| Energy             | 1449kJ<br>345kCal |
| Carbohydrates      | 73g               |
| of which sugars    | 1g                |
| Fat                | 0.9g              |
| of which saturates | 0.25g             |
| Fibre              | 0.4g              |
| Protein            | 12g               |
| Salt               | 0.02g             |

Allergy Information

Key: Contains May Contain

  
Contains Cereal/Gluten

  
Does Not Contain Milk

  
Does Not Contain Eggs

  
Does Not Contain Peanuts

  
Does Not Contain Nuts

  
Does Not Contain Crustaceans

  
Does Not Contain Mustard

  
Does Not Contain Fish

  
Does Not Contain Lupin

  
Does Not Contain Sesame

  
Does Not Contain Celery

  
Does Not Contain Soya

  
Does Not Contain Molluscs

  
Does Not Contain Sulphur Dioxide

Allergen Statement  
This product contains **WHEAT**

Ingredients

100% Durum **WHEAT** Semolina

Dietary Information

Key: Suitable for

  
Suitable for Vegetarian

  
Suitable for Vegan

  
May not be suitable for Kosher

  
May not be suitable for Halal

  
NO DATA for Coeliac