

Supplier's Product Code :
Product Added :
Last Updated by Supplier :
erudus id :

012211P
29 May 2026
30 May 2026
c73d6ef47d264fc7a57666ff06017dbe



The information on the **Erudus System** has been supplied by the manufacturers of the products and, whilst the owners of the Erudus System take steps to ensure the information is regularly updated, they give no warranty and no guarantee that the information is accurate. Product information and ingredients may change, please always read product labels carefully in addition to using the information provided by Erudus One.

We do not accept liability for any inaccuracies or incorrect information contained on this site. Please visit <http://www.erudus.com/terms-and-conditions> for full terms and conditions.

Purple Pineapple BBQ Pulled Pork 1kg

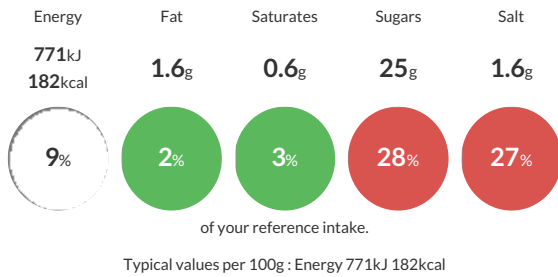
Short Product Name:
BBQ Pulled Pork

Pulled pork in an American style BBQ sauce

Traded Unit GTIN: Internal GTIN: Supplier: **Kff Ltd** Suppliers Product Code: **012211P**

Reference Intake

Each 100g portion contains:



Nutritional Information

Typical Values	Per 100g
Energy	771kJ 182kCal
Carbohydrates	26g
of which sugars	25g
Fat	1.6g
of which saturates	0.6g
Fibre	0.9g
Protein	16g
Salt	1.6g

Allergy Information

Key: **Contains** **May Contain**



Dietary Information

Key: **Suitable for**



Ingredients

Pork (50%), Smokey BBQ Sauce (50%) [Sugar, Tomato Paste, Water, Spirit Vinegar, Molasses, Salt, Modified Starch, Dried Onion, Paprika, Dried Garlic, Dried Coriander, Smoke Flavourings, Black Pepper, Nutmeg, Natural Flavouring]

ALLERGY ADVICE: For allergens, see ingredients in Bold