

Supplier's Product Code :  
Product Added :  
Last Updated by Supplier :  
erudus id :

3032  
09 July 2025  
09 July 2025  
c7b796f3a038405baa5bd44d98979ed1



The information on the Erudus System has been supplied by the manufacturers of the products and, whilst the owners of the Erudus System take steps to ensure the information is regularly updated, they give no warranty and no guarantee that the information is accurate. Product information and ingredients may change, please always read product labels carefully in addition to using the information provided by Erudus One.

We do not accept liability for any inaccuracies or incorrect information contained on this site. Please visit <http://www.erudus.com/terms-and-conditions> for full terms and conditions.

## Premium British Lamb Leg

Short Product Name:

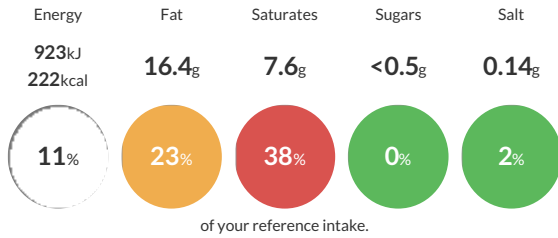
Red Tractor Assured Boneless & Tied Lamb Leg

British Boneless Lamb Leg with chump on Shank off. Femur bone removed through tunnel boning, cod fat removed and external fat adjusted to 6mm. Both ends squared up by trimming the extra fat and joint secured using white and green twin at approximately 20 - 30mm intervals. Product tolerance 1.4 - 1.8kg per joint

Traded Unit GTIN: 5032990003315 Internal GTIN: Supplier: Pilgrim's UK Lamb Suppliers Product Code : 3032

### Reference Intake

Each 100g portion contains:



Typical values per 100g : Energy 923kJ 222kcal

### Nutritional Information

Typical Values	Per 100g
Energy	923kJ 222kCal
Carbohydrates	<0.5g
of which sugars	<0.5g
Fat	16.4g
of which saturates	7.6g
Fibre	0g
Protein	18.6g
Salt	0.14g

### Allergy Information

Key: Contains May Contain



#### Gluten Claim

Gluten content is less than 20ppm.

#### Allergen Statement

n/a

### Ingredients

100% lamb

### Dietary Information

Key: Suitable for

