

The information on the [Erudus System](#) has been supplied by the manufacturers of the products and, whilst the owners of the Erudus System take steps to ensure the information is regularly updated, they give no warranty and no guarantee that the information is accurate. Product information and ingredients may change, please always read product labels carefully in addition to using the information provided by Erudus One.

We do not accept liability for any inaccuracies or incorrect information contained on this site. Please visit <http://www.erudus.com/terms-and-conditions> for full terms and conditions.

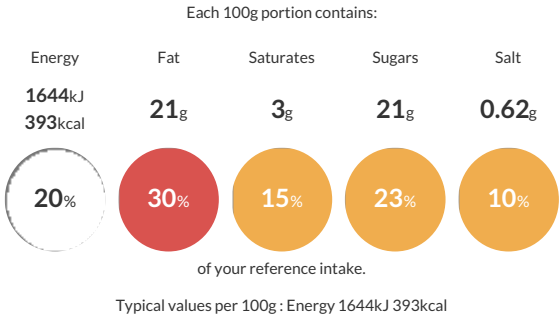
Fletchers The Signature Bakery Range Mammoth Double Chocolate Muffins x 24

Short Product Name:

A large American style chocolate cake muffin with an even distribution of plain chocolate chunks throughout the crumb.

Traded Unit GTIN: **05010066114363** Internal GTIN: Supplier : **Kara Foodservice (Fletchers)** Suppliers Product Code : **F01436**

Reference Intake



Nutritional Information

Typical Values	Per 100g
Energy	1644kJ 393kCal
Carbohydrates	44.1g
of which sugars	21g
Fat	21g
of which saturates	3g
Fibre	2.3g
Protein	5.8g
Salt	0.62g

Allergy Information

Key: **Contains** **May Contain**


Contains Cereal/Gluten


Contains Milk


Contains Eggs


Does Not Contain Peanuts


Does Not Contain Nuts


Does Not Contain Crustaceans


Does Not Contain Mustard


Does Not Contain Fish


Does Not Contain Lupin


May Contain Sesame


Does Not Contain Celery


Contains Soya


Does Not Contain Molluscs


Does Not Contain Sulphur Dioxide

Dietary Information

Key: **Suitable for**


Suitable for Vegetarian


May not be suitable for Vegan


May not be suitable for Kosher


May not be suitable for Halal


May not be suitable for Coeliac

Allergen Statement
For allergens, including cereals containing Gluten, see ingredients in bold. Also may contain sesame seeds.

Ingredients

WHEAT Flour (**WHEAT** Flour, Calcium, Iron, Niacin, Thiamin), Sugar, **EGG**, Rapeseed Oil, Chocolate Chunks (10%) [Sugar, Cocoa Mass, Cocoa Butter, Emulsifier (**SOYA** Lecithin), Flavouring], Water, Fat Reduced Cocoa Powder, Maize Starch, **EGG** White, Whey Powder (**MILK**), Raising Agents (Potassium Carbonate, Disodium Diphosphate), Emulsifiers (Polyglycerol Esters of Fatty Acids), Salt, Flavouring, Stabiliser (Xanthan Gum).