

Supplier's Product Code :  
Product Added :  
Last Updated by Supplier :  
erudus id :

WibbleStrawb1.9kg  
10 April 2025  
10 April 2025  
cae2336779d1410a88d21ba3632d2ae1



The information on the [Erudus System](#) has been supplied by the manufacturers of the products and, whilst the owners of the Erudus System take steps to ensure the information is regularly updated, they give no warranty and no guarantee that the information is accurate. Product information and ingredients may change, please always read product labels carefully in addition to using the information provided by Erudus One.

We do not accept liability for any inaccuracies or incorrect information contained on this site. Please visit <http://www.erudus.com/terms-and-conditions> for full terms and conditions.

## Wibble Strawberry Vegan Jelly Crystals

Short Product Name:

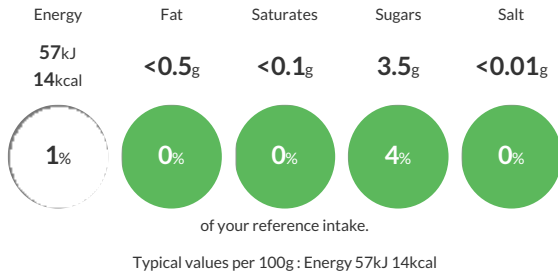
Strawberry flavour vegan jelly crystals

Strawberry vegan jelly crystals

Traded Unit GTIN: **5060666570816** Internal GTIN: **5060666570427** Supplier: **Wibble Foods Ltd** Suppliers Product Code: **WibbleStrawb1.9kg**

### Reference Intake

Each 100g portion contains:



### Nutritional Information

Typical Values	Per 100g
Energy	57kJ 14kCal
Carbohydrates	8.5g
of which sugars	3.5g
Fat	<0.5g
of which saturates	<0.1g
Fibre	<0.5g
Protein	<0.5g
Salt	<0.01g

### Allergy Information

Key: **Contains** **May Contain**



### Dietary Information

Key: **Suitable for**



### Ingredients

Sweeteners (Erythritol, Stevia Extract), Fruit Sugar, Acidity Regulators (Potassium Citrate, Citric Acid), Gelling Agent: Carrageenan, Natural Strawberry Flavouring, Natural Colouring (Red Beet, Beta Carotene).