

Supplier's Product Code :
 Product Added :
 Last Updated by Supplier :
 erudus id :

012343P
 29 May 2026
 30 May 2026
 cbfd04441dc4400cbc0172a0aa65cb33



The information on the **Erudus System** has been supplied by the manufacturers of the products and, whilst the owners of the Erudus System take steps to ensure the information is regularly updated, they give no warranty and no guarantee that the information is accurate. Product information and ingredients may change, please always read product labels carefully in addition to using the information provided by Erudus One.

We do not accept liability for any inaccuracies or incorrect information contained on this site. Please visit <http://www.erudus.com/terms-and-conditions> for full terms and conditions.

Purple Pineapple Sliced Chicken with Salsa Sauce 1kg

Short Product Name:

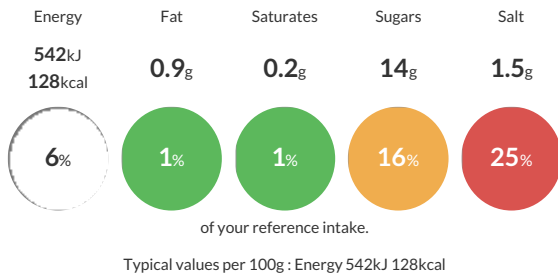
Sliced Chicken with Salsa Sauce

Roast pepper salsa with sliced chicken, red kidney beans and sweetcorn

Traded Unit GTIN: Internal GTIN: Supplier: **Kff Ltd** Suppliers Product Code: **012343P**

Reference Intake

Each 100g portion contains:



Nutritional Information

Typical Values	Per 100g
Energy	542kJ 128kCal
Carbohydrates	20g
of which sugars	14g
Fat	0.9g
of which saturates	0.2g
Fibre	1.5g
Protein	9.3g
Salt	1.5g

Allergy Information

Key: **Contains** **May Contain**

Does Not Contain Cereal/Gluten	Does Not Contain Milk	Does Not Contain Eggs	Does Not Contain Peanuts	Does Not Contain Nuts	Does Not Contain Crustaceans	Does Not Contain Mustard
Does Not Contain Fish	Does Not Contain Lupin	Does Not Contain Sesame	Does Not Contain Celery	Does Not Contain Soya	Does Not Contain Molluscs	Does Not Contain Sulphur Dioxide

Dietary Information

Key: **Suitable for**

May not be suitable for Vegetarian	May not be suitable for Vegan	May not be suitable for Kosher	May not be suitable for Halal	NO DATA for Coeliac
------------------------------------	-------------------------------	--------------------------------	-------------------------------	---------------------

Ingredients

Roast Pepper Salsa (50%) [Water, Glucose Syrup Solids, Red Peppers Roasted (Red Pepper, Water, Salt, Citric Acid E330), Vinegar, Tomato Paste, Onion, Molasses, Thickener Modified Starch (E1422), Red Bell Pepper, Salt, Dehydrated Vegetable Tomato, Onion, Garlic, Vegetable Oil Rapeseed, Cayenne, Coriander Leaf], Chicken (30%) [Chicken Breast, Rice Starch, Salt, Dextrose, D Xylose, Maltodextrin, Stabilisers (Sodium Bicarbonate, Sodium Citrates)], Sweetcorn (10%) [Sweet Corn, Water, Salt, Citric Acid], Red Kidney Beans (10%) [Red Kidney Beans, Water, Firming Agent (Calcium Chloride)]

ALLERGY ADVICE: For allergens, see ingredients in Bold