




The information on the [Erudus System](#) has been supplied by the manufacturers of the products and, whilst the owners of the Erudus System take steps to ensure the information is regularly updated, they give no warranty and no guarantee that the information is accurate. Product information and ingredients may change, please always read product labels carefully in addition to using the information provided by Erudus One.

We do not accept liability for any inaccuracies or incorrect information contained on this site. Please visit <http://www.erudus.com/terms-and-conditions> for full terms and conditions.

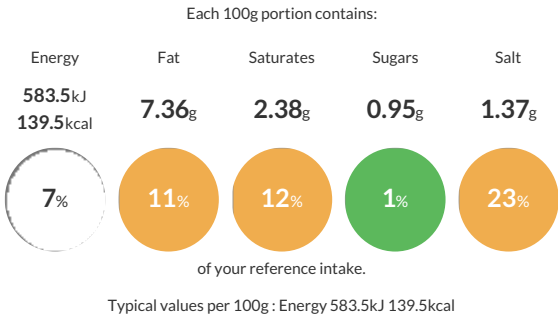
Purple Pineapple Meatball Salsa 1kg

Short Product Name:
Meatball Salsa

Meatballs in a chunky Mexican style salsa sauce

Traded Unit GTIN:  Internal GTIN:  Supplier:  Suppliers Product Code: 

Reference Intake



Nutritional Information

Typical Values	Per 100g
Energy	583.5kJ 139.5kCal
Carbohydrates	8.77g
of which sugars	0.95g
Fat	7.36g
of which saturates	2.38g
Fibre	1.55g
Protein	8.8g
Salt	1.37g

Allergy Information

Key:  Contains  May Contain



Contains Cereal/Gluten



Does Not Contain Milk



Does Not Contain Eggs



Does Not Contain Peanuts



Does Not Contain Nuts



Does Not Contain Crustaceans



Does Not Contain Mustard



Does Not Contain Fish



Does Not Contain Lupin



Does Not Contain Sesame



Does Not Contain Celery



Does Not Contain Soya



Does Not Contain Molluscs



Does Not Contain Sulphur Dioxide

Dietary Information

Key:  Suitable for



May not be suitable for Vegetarian



May not be suitable for Vegan



May not be suitable for Kosher



May not be suitable for Halal



NO DATA for Coeliac

Ingredients

Salsa Sauce 50% (Tomato, onion, tomato purée, red pepper, green pepper, jalapeño pepper, sugar, salt, modified maize starch, garlic purée, concentrated lime juice, acidity regulator (citric acid), coriander leaf, black pepper, flavourings). Meatballs 50% (Pork, Beef, Potato Flake, Rehydrated Onion, Pork Fat, Potato Starch, Dextrose, Salt, Yeast Extract, Sugar, Spices, Wheat Flour (**WHEAT** Flour, Calcium Carbonate, Iron, Thiamine, Nicotinamide)). (**GLUTEN**) .