

The information on the [Erudus System](#) has been supplied by the manufacturers of the products and, whilst the owners of the Erudus System take steps to ensure the information is regularly updated, they give no warranty and no guarantee that the information is accurate. Product information and ingredients may change, please always read product labels carefully in addition to using the information provided by Erudus One.

We do not accept liability for any inaccuracies or incorrect information contained on this site. Please visit <http://www.erudus.com/terms-and-conditions> for full terms and conditions.

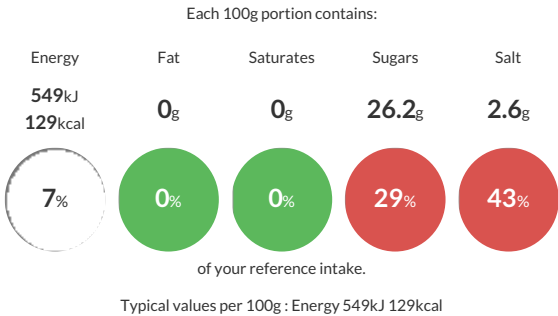
TAMARI & GINGER TERIYAKI SAUCE 1Ltr

Short Product Name:
Tamari sauce

TAMARI & GINGER TERIYAKI SAUCE 1Ltr

Traded Unit GTIN: - Internal GTIN: Supplier: Cheese Cellar (H&B Foods) Suppliers Product Code: HS527

Reference Intake



Nutritional Information

Typical Values	Per 100g
Energy	549kJ 129kCal
Carbohydrates	30.5g
of which sugars	26.2g
Fat	0g
of which saturates	0g
Fibre	0.1g
Protein	1.6g
Salt	2.6g

Allergy Information

Key: Contains May Contain


Does Not Contain Cereal/Gluten


Does Not Contain Milk


Does Not Contain Eggs


Does Not Contain Peanuts


Does Not Contain Nuts


Does Not Contain Crustaceans


Does Not Contain Mustard


Does Not Contain Fish



Does Not Contain Lupin


Does Not Contain Sesame


Does Not Contain Celery


Contains Soya


Does Not Contain Molluscs


Does Not Contain Sulphur Dioxide

Dietary Information

Key: Suitable for


Suitable for Vegetarian


Suitable for Vegan


May not be suitable for Kosher


May not be suitable for Halal


Suitable for Coeliac

Ingredients

Water, Demerara Sugar, Gluten Free SOY Sauce 22%(SOYA Beans, Water,Salt, Alcohol), Rice Vinegar 8% (Water, Rice, Salt), Ginger Puree (Ginger, Salt, Citric Acid), Maize Starch, Preservative: Potassium Sorbate. Acidity Regulator: Citric Acid.