





The information on the [Erudus System](#) has been supplied by the manufacturers of the products and, whilst the owners of the Erudus System take steps to ensure the information is regularly updated, they give no warranty and no guarantee that the information is accurate. Product information and ingredients may change, please always read product labels carefully in addition to using the information provided by Erudus One.

We do not accept liability for any inaccuracies or incorrect information contained on this site. Please visit <http://www.erudus.com/terms-and-conditions> for full terms and conditions.

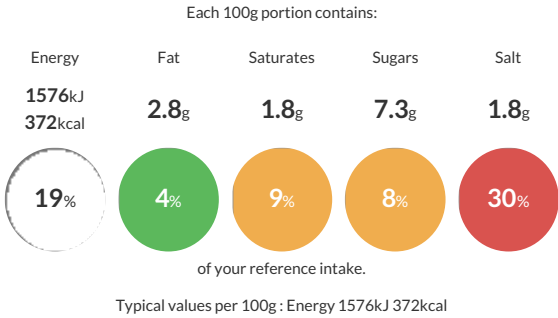
Donoco Crepe Mix

Short Product Name:

A dry pre-mix for producing Crepe.

Traded Unit GTIN:  Internal GTIN:  5028081006891 Supplier:  Middleton Foods Suppliers Product Code :  MX8110

Reference Intake



Nutritional Information

Typical Values	Per 100g
Energy	1576kJ 372kCal
Carbohydrates	74g
of which sugars	7.3g
Fat	2.8g
of which saturates	1.8g
Fibre	-g
Protein	13g
Salt	1.8g

Allergy Information

Key:  Contains  May Contain


Contains Cereal/Gluten


Contains Milk


Contains Eggs


Does Not Contain Peanuts


Does Not Contain Nuts


Does Not Contain Crustaceans


Does Not Contain Mustard


Does Not Contain Fish


Does Not Contain Lupin


Does Not Contain Sesame


Does Not Contain Celery


May Contain Soya


Does Not Contain Molluscs


Does Not Contain Sulphur Dioxide

Dietary Information

Key:  Suitable for


Suitable for Vegetarian


May not be suitable for Vegan


May not be suitable for Kosher


May not be suitable for Halal


May not be suitable for Coeliac

Ingredients

WHEAT Flour (WHEAT, Calcium, Iron, Niacin, Thiamin), MILK Protein (Whey Powder, Acid Casein), Dried Whole EGG Powder, Dried EGG White Powder, Salt.