

Supplier's Product Code :
Product Added :
Last Updated by Supplier :
erudus id :

012344P
19 May 2026
20 May 2026
ceb558bdbca84f9db00c84449019b247



The information on the Erudus System has been supplied by the manufacturers of the products and, whilst the owners of the Erudus System take steps to ensure the information is regularly updated, they give no warranty and no guarantee that the information is accurate. Product information and ingredients may change, please always read product labels carefully in addition to using the information provided by Erudus One.

We do not accept liability for any inaccuracies or incorrect information contained on this site. Please visit <http://www.erudus.com/terms-and-conditions> for full terms and conditions.

Purple Pineapple Sliced Chicken with Salsa Sauce 2.5kg

Short Product Name:

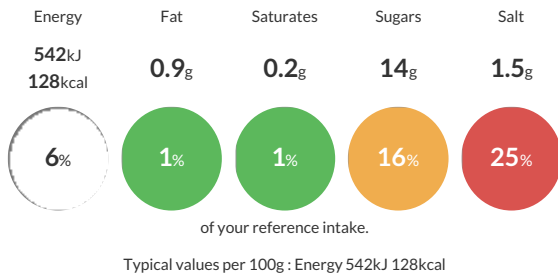
Sliced Chicken with Salsa Sauce

Roast pepper salsa with sliced chicken, red kidney beans and sweetcorn

Traded Unit GTIN: Internal GTIN: Supplier: Suppliers Product Code:

Reference Intake

Each 100g portion contains:



Nutritional Information

Typical Values	Per 100g
Energy	542kJ 128kCal
Carbohydrates	20g
of which sugars	14g
Fat	0.9g
of which saturates	0.2g
Fibre	1.5g
Protein	9.3g
Salt	1.5g

Allergy Information

Key: Contains May Contain



Dietary Information

Key: Suitable for



Ingredients

Roast Pepper Salsa (50%) [Water, Glucose Syrup Solids, Red Peppers Roasted (Red Pepper, Water, Salt, Citric Acid E330), Vinegar, Tomato Paste, Onion, Molasses, Thickener Modified Starch (E1422), Red Bell Pepper, Salt, Dehydrated Vegetable Tomato, Onion, Garlic, Vegetable Oil Rapeseed, Cayenne, Coriander Leaf], Chicken (30%) [Chicken Breast, Rice Starch, Salt, Dextrose, D Xylose, Maltodextrin, Stabilisers (Sodium Bicarbonate, Sodium Citrates)], Sweetcorn (10%) [Sweet Corn, Water, Salt, Citric Acid], Red Kidney Beans (10%) [Red Kidney Beans, Water, Firming Agent (Calcium Chloride)]

ALLERGY ADVICE: For allergens, see ingredients in Bold