

The information on the [Erudus System](#) has been supplied by the manufacturers of the products and, whilst the owners of the Erudus System take steps to ensure the information is regularly updated, they give no warranty and no guarantee that the information is accurate. Product information and ingredients may change, please always read product labels carefully in addition to using the information provided by Erudus One.




We do not accept liability for any inaccuracies or incorrect information contained on this site. Please visit <http://www.erudus.com/terms-and-conditions> for full terms and conditions.

Melon Honeydew Medium

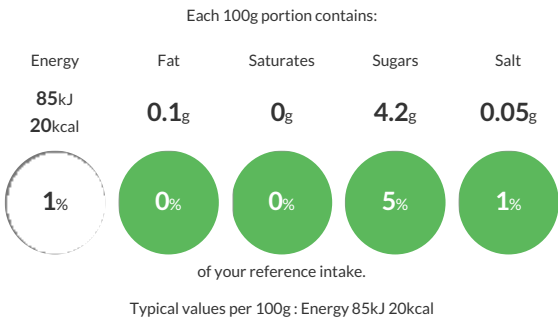
Warning! This Product Specification complies with EU Food Information Regulation No. 1169/2011 (FIR) however we are still awaiting further product attributes to complete the full Erudus specification.

Short Product Name:
Melon Honeydew

Oval in shape and with a bright yellow skin, honeydew melons have a sweet and juicy, pale green flesh. Minimum weight 0.9kg.

Traded Unit GTIN:  Internal GTIN: Supplier :  Suppliers Product Code : 

Reference Intake



Nutritional Information

Typical Values	Per 100g
Energy	85kJ 20kCal
Carbohydrates	4.2g
of which sugars	4.2g
Fat	0.1g
of which saturates	0g
Fibre	0.4g
Protein	0.4g
Salt	0.05g

Allergy Information

Key:  


Does Not Contain Cereal/Gluten


Does Not Contain Milk


Does Not Contain Eggs


Does Not Contain Peanuts


Does Not Contain Nuts


Does Not Contain Crustaceans


Does Not Contain Mustard


Does Not Contain Fish


Does Not Contain Lupin


Does Not Contain Sesame


Does Not Contain Celery


Does Not Contain Soya


Does Not Contain Molluscs


Does Not Contain Sulphur Dioxide

Gluten Claim
Gluten content is less than 20ppm.

Ingredients

Honeydew Melon

Dietary Information

Key: 


Suitable for Vegetarian


Suitable for Vegan


May not be suitable for Kosher


May not be suitable for Halal


Suitable for Coeliac