

The information on the [Erudus System](#) has been supplied by the manufacturers of the products and, whilst the owners of the Erudus System take steps to ensure the information is regularly updated, they give no warranty and no guarantee that the information is accurate. Product information and ingredients may change, please always read product labels carefully in addition to using the information provided by Erudus One.

We do not accept liability for any inaccuracies or incorrect information contained on this site. Please visit <http://www.erudus.com/terms-and-conditions> for full terms and conditions.

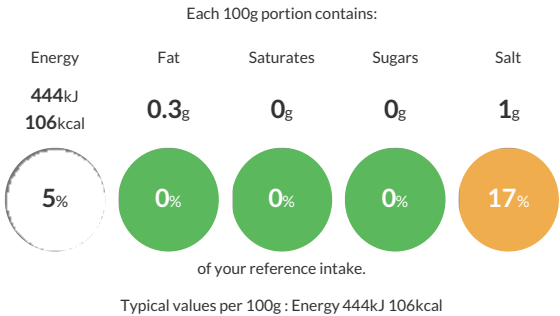
Anna Chick Peas in Brine 12 x 400g

Short Product Name:
Chick Peas in Brine

Anna Chick Peas in Brine 12 x 400g

Traded Unit GTIN: 8050444750094 Internal GTIN: 8050444752258 Supplier : Caterers Choice Ltd Suppliers Product Code : BNS0480

Reference Intake



Nutritional Information

Typical Values	Per 100g
Energy	444kJ 106kCal
Carbohydrates	14.2g
of which sugars	0g
Fat	0.3g
of which saturates	0g
Fibre	8g
Protein	7.5g
Salt	1g

Allergy Information

Key: Contains May Contain


May Contain Cereal/Gluten


Does Not Contain Milk



Does Not Contain Eggs


Does Not Contain Peanuts


Does Not Contain Nuts


Does Not Contain Crustaceans


May Contain Mustard


Does Not Contain Fish


Does Not Contain Lupin


Does Not Contain Sesame


Does Not Contain Celery


May Contain Soya


Does Not Contain Molluscs


Does Not Contain Sulphur Dioxide

Dietary Information

Key: Suitable for


Suitable for Vegetarian


Suitable for Vegan


May not be suitable for Kosher


May not be suitable for Halal


NO DATA for Coeliac

Ingredients

Chick Peas (60%), Water, Salt.