

Supplier's Product Code :
 Product Added :
 Last Updated by Supplier :
 erudus id :

KPOP502Z
 22 June 2026
 22 June 2026
 d26bce88ce4f4cb586a403d2b543e089



The information on the **Erudus System** has been supplied by the manufacturers of the products and, whilst the owners of the Erudus System take steps to ensure the information is regularly updated, they give no warranty and no guarantee that the information is accurate. Product information and ingredients may change, please always read product labels carefully in addition to using the information provided by Erudus One.

We do not accept liability for any inaccuracies or incorrect information contained on this site. Please visit <http://www.erudus.com/terms-and-conditions> for full terms and conditions.

Japanese Style Breaded Torpedo King Prawns

Short Product Name:

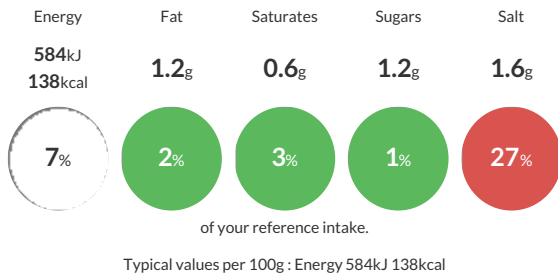
King Prawn Breaded Torpedo 21/25 IQF Raw PDTO

25 Tail-on King Prawns Coated in Crispy Breadcrumbs.

Traded Unit GTIN: **05011659702844** Internal GTIN: **5011659702837** Supplier: **Sea Products International Limited** Suppliers Product Code: **KPOP502Z**

Reference Intake

Each 100g portion contains:



Nutritional Information

Typical Values	Per 100g
Energy	584kJ 138kCal
Carbohydrates	22.6g
of which sugars	1.2g
Fat	1.2g
of which saturates	0.6g
Fibre	-g
Protein	10g
Salt	1.6g

Allergy Information

Key: **Contains** **May Contain**



Dietary Information

Key: **Suitable for**



Ingredients

King Prawns (40%) (Litopenaeus Vannamei) (King Prawns (CRUSTACEANS), Water, Salt, Stabilisers: E451i, E452i), Breadcrumbs (WHEAT Flour, Palm Oil, Sugar, Yeast, Salt, Bread Improver [Corn Starch, Natural Colour: E170, Acidity Regulators: E516, E300]), Batter (Water, WHEAT Flour, Modified Starch Preparation [Vegetable Oil (Cassava), Thickener: E412, E471], Modified Starch, Salt, Palm Oil, Thickener: E412, Baking Powder [Raising Agent: E500, Emulsifier: E450, E341, Corn Starch], Sugar, Spice extract [Dextrin, Emulsifier: E1450, E471; Lactic Acid]), Predust (Corn Starch, Salt, WHEAT Flour).