

Supplier's Product Code :
Product Added :
Last Updated by Supplier :
erudus id :

462117
01 June 2026
01 June 2026
d4828e0f3b354d59a3ddb19d818e18f3



The information on the Erudus System has been supplied by the manufacturers of the products and, whilst the owners of the Erudus System take steps to ensure the information is regularly updated, they give no warranty and no guarantee that the information is accurate. Product information and ingredients may change, please always read product labels carefully in addition to using the information provided by Erudus One.

We do not accept liability for any inaccuracies or incorrect information contained on this site. Please visit <http://www.erudus.com/terms-and-conditions> for full terms and conditions.

GLXY Cml 24x48g UK IRL COP

Short Product Name:

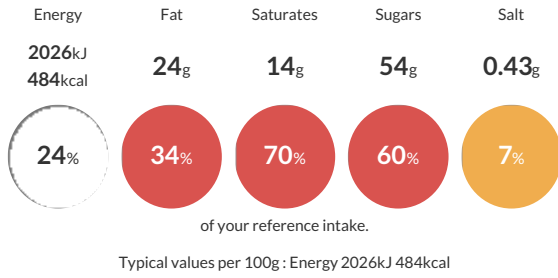
GALAXY Caramel Chocolate std (twin) tablets 48g

Block Chocolate

Traded Unit GTIN: 5900951313219 Internal GTIN: 5900951313196 Supplier: Mars Suppliers Product Code: 462117

Reference Intake

Each 100g portion contains:



Nutritional Information

Typical Values	Per 100g
Energy	2026kJ 484kCal
Carbohydrates	60g
of which sugars	54g
Fat	24g
of which saturates	14g
Fibre	-g
Protein	5.5g
Salt	0.43g

Allergy Information

Key: **Contains** **May Contain**



Dietary Information

Key: **Suitable for**



Ingredients

Sugar, Glucose Syrup, Skimmed MILK Powder, Cocoa Butter, Palm Fat, Cocoa Mass, MILK Fat, Whey Permeate (MILK), Emulsifier (SOYA Lecithin), Salt,