

The information on the [Erudus System](#) has been supplied by the manufacturers of the products and, whilst the owners of the Erudus System take steps to ensure the information is regularly updated, they give no warranty and no guarantee that the information is accurate. Product information and ingredients may change, please always read product labels carefully in addition to using the information provided by Erudus One.

We do not accept liability for any inaccuracies or incorrect information contained on this site. Please visit <http://www.erudus.com/terms-and-conditions> for full terms and conditions.

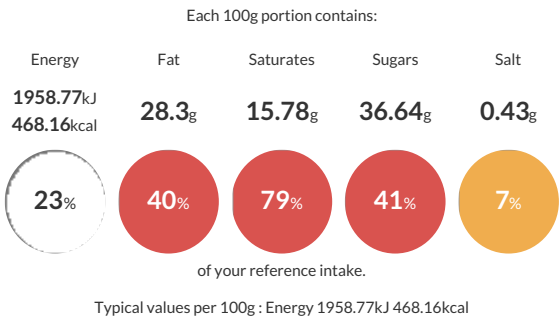
# The Homemade Brownie Company - Snickers Chocolate Brownie pack of 16 x 60g portions

Short Product Name:  
Snickers Chocolate Brownie

A full tray of Snickers chocolate brownies, pre-cut into 16 individual 7cm x 5cm portions (min. weight 60g). Gluten-free.

Traded Unit GTIN: 25065007366886 Internal GTIN: 15065007366889 Supplier : The Homemade Brownie Company Ltd Suppliers Product Code : FSO-00006

## Reference Intake



## Nutritional Information

Typical Values	Per 100g
Energy	1958.77kJ 468.16kCal
Carbohydrates	47.42g
of which sugars	36.64g
Fat	28.3g
of which saturates	15.78g
Fibre	-g
Protein	5.06g
Salt	0.43g

## Allergy Information

Key: Contains May Contain

  
Does Not Contain Cereal/Gluten

  
Contains Milk

  
Contains Eggs

  
Contains Peanuts

  
May Contain Nuts

  
Does Not Contain Crustaceans

  
Does Not Contain Mustard

  
Does Not Contain Fish

  
Does Not Contain Lupin

  
Does Not Contain Sesame

  
Does Not Contain Celery

  
Contains Soya

  
Does Not Contain Molluscs

  
Does Not Contain Sulphur Dioxide

Gluten Claim  
Gluten content is less than 20ppm.

## Ingredients

Sugar, Dark Chocolate (Cocoa Mass, Sugar, Cocoa Butter, Emulsifier (<b>Soya</b>), Natural Vanilla Flavouring) (19%), Butter (Butter (<b>Milk</b>), Salt), <b>Egg</b>, Gluten Free Flour (Flour Blend (Rice, Potato, Tapioca, Maize, Buckwheat)), Milk Chocolate with Soft Nougat, Caramel and Peanuts (Sugar, Glucose Syrup, <b>Peanuts</b>, Skimmed <b>Milk</b> Powder, Cocoa Butter, Cocoa Mass, Sunflower Oil, Palm Fat, Whey Permeate (<b>Milk</b>), <b>Milk</b> Fat, Salt, Emulsifier (<b>Soya</b> Lecithin), <b>Egg</b> White Powder) (10%), <b>Peanuts</b>, Salted Caramel Sauce (Double Cream (<b>Milk</b>), Golden Syrup, Sugar, Sea Salt), Baking Powder (Raising Agents (Mono Calcium Phosphate, Sodium Bicarbonate), Corn Starch)

## Dietary Information

Key: Suitable for

  
Suitable for Vegetarian

  
May not be suitable for Vegan

  
NO DATA for Kosher

  
NO DATA for Halal

  
Suitable for Coeliac