


The information on the [Erudus System](#) has been supplied by the manufacturers of the products and, whilst the owners of the Erudus System take steps to ensure the information is regularly updated, they give no warranty and no guarantee that the information is accurate. Product information and ingredients may change, please always read product labels carefully in addition to using the information provided by Erudus One.

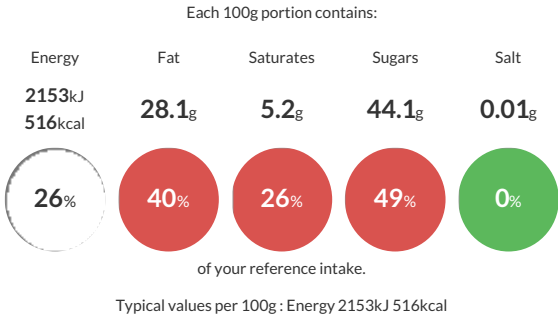
We do not accept liability for any inaccuracies or incorrect information contained on this site. Please visit <http://www.erudus.com/terms-and-conditions> for full terms and conditions.

SWEET HONEY CASHEWS (48 x 40g)

Short Product Name:  
whole cashews caramelised with sugar and honey

Traded Unit GTIN:  Internal GTIN: Supplier : [Cranberry Enterprise](#) Suppliers Product Code : [BE007.040.48](#)

Reference Intake



Nutritional Information

Typical Values	Per 100g
Energy	2153kJ 516kCal
Carbohydrates	49g
of which sugars	44.1g
Fat	28.1g
of which saturates	5.2g
Fibre	5.5g
Protein	13.9g
Salt	0.01g

Allergy Information

Key: Contains May Contain

  
Does Not Contain Cereal/Gluten

  
May Contain Milk

  
May Contain Eggs

  
May Contain Peanuts

  
Contains Nuts

  
Does Not Contain Crustaceans

  
Does Not Contain Mustard

  
Does Not Contain Fish

  
Does Not Contain Lupin

  
May Contain Sesame

  
Does Not Contain Celery

  
Does Not Contain Soya

  
Does Not Contain Molluscs

  
Does Not Contain Sulphur Dioxide

Dietary Information

Key: Suitable for

  
Suitable for Vegetarian

  
May not be suitable for Vegan

  
May not be suitable for Kosher

  
May not be suitable for Halal

  
May not be suitable for Coeliac

Ingredients

CASHEWS, sugar, honey, emulsifire (sunflower lecithin)