


The information on the [Erudus System](#) has been supplied by the manufacturers of the products and, whilst the owners of the Erudus System take steps to ensure the information is regularly updated, they give no warranty and no guarantee that the information is accurate. Product information and ingredients may change, please always read product labels carefully in addition to using the information provided by Erudus One.

We do not accept liability for any inaccuracies or incorrect information contained on this site. Please visit <http://www.erudus.com/terms-and-conditions> for full terms and conditions.

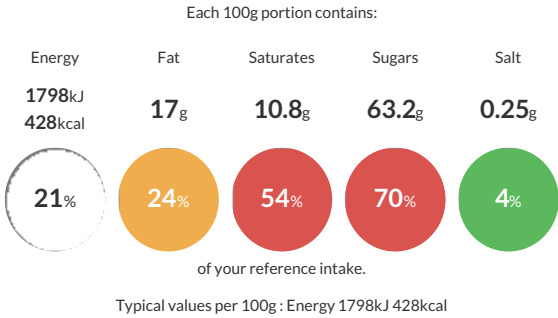
MARVELLOUS MILK CHOCOLATE RAISINS

Short Product Name:

raisins with milk chocolate coating

Traded Unit GTIN:  Internal GTIN: Supplier : **Cranberry Enterprise** Suppliers Product Code : **BE019.050.48**

Reference Intake



Nutritional Information

Typical Values	Per 100g
Energy	1798kJ 428kCal
Carbohydrates	63.6g
of which sugars	63.2g
Fat	17g
of which saturates	10.8g
Fibre	1.2g
Protein	4.6g
Salt	0.25g

Allergy Information

Key: **Contains** **May Contain**


May Contain Cereal/Gluten


Contains Milk


May Contain Eggs


May Contain Peanuts


May Contain Nuts


Does Not Contain Crustaceans


Does Not Contain Mustard


Does Not Contain Fish


Does Not Contain Lupin


May Contain Sesame


Does Not Contain Celery


Does Not Contain Soya


Does Not Contain Molluscs


Does Not Contain Sulphur Dioxide

Dietary Information

Key: **Suitable for**


Suitable for Vegetarian


May not be suitable for Vegan


May not be suitable for Kosher


May not be suitable for Halal


May not be suitable for Coeliac

Ingredients

raisins, sugar, **MILK** Powder, cocoa butter, cocoa mass, unhydrogenated vegetable fat, **WHEY** Powder, emulsifier (sunflower lecithin), glazing agents: shellac, gum Arabic.