

Supplier's Product Code :
 Product Added :
 Last Updated by Supplier :
 erudus id :

CSBP450
 09 April 2026
 09 April 2026
 d5f0e7c64d704b0a9414c04f45c37ae9



The information on the **Erudus System** has been supplied by the manufacturers of the products and, whilst the owners of the Erudus System take steps to ensure the information is regularly updated, they give no warranty and no guarantee that the information is accurate. Product information and ingredients may change, please always read product labels carefully in addition to using the information provided by Erudus One.

We do not accept liability for any inaccuracies or incorrect information contained on this site. Please visit <http://www.erudus.com/terms-and-conditions> for full terms and conditions.

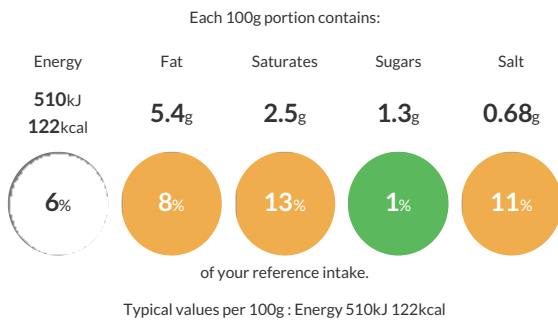
Chicken & Smokey Bacon Pasta 450g x 8

Short Product Name:
 Chicken & Smokey Bacon Pasta

Chicken breast & pasta shells in a cheese & smoked bacon sauce

Traded Unit GTIN: **5060058032137** Internal GTIN: Supplier: **Scheff Foods Ltd** Suppliers Product Code: **CSBP450**

Reference Intake



Nutritional Information

Typical Values	Per 100g
Energy	510kJ 122kCal
Carbohydrates	10.2g
of which sugars	1.3g
Fat	5.4g
of which saturates	2.5g
Fibre	0.4g
Protein	8.7g
Salt	0.68g

Allergy Information

Key: **Contains** **May Contain**

Contains Cereal/Gluten	Contains Milk	Does Not Contain Eggs	Does Not Contain Peanuts	Does Not Contain Nuts	Does Not Contain Crustaceans	Does Not Contain Mustard
Does Not Contain Fish	Does Not Contain Lupin	Does Not Contain Sesame	Does Not Contain Celery	Does Not Contain Soya	Does Not Contain Molluscs	Does Not Contain Sulphur Dioxide

Dietary Information

Key: **Suitable for**

May not be suitable for Vegetarian	May not be suitable for Vegan	May not be suitable for Kosher	May not be suitable for Halal	NO DATA for Coeliac
------------------------------------	-------------------------------	--------------------------------	-------------------------------	---------------------

Ingredients

Water, Cooked Pasta Shells (24%) (Contains Water, Durum **WHEAT** Semolina, Rapeseed Oil), Cooked Chicken Breast (16%) (Contains Chicken, Salt), **MILK**, Cheddar Cheese [**MILK**], Bacon (4%) (Contains Pork, Water, Salt), Medium Fat Hard Cheese [**MILK**], Fortified **WHEAT** Flour (Contains Calcium Carbonate, Iron, Niacin, Thiamin), Full Fat Soft Cheese [**MILK**], Rapeseed Oil, Cornflour, **MILK** Powder, Salt, Herb, Spice