

The information on the [Erudus System](#) has been supplied by the manufacturers of the products and, whilst the owners of the Erudus System take steps to ensure the information is regularly updated, they give no warranty and no guarantee that the information is accurate. Product information and ingredients may change, please always read product labels carefully in addition to using the information provided by Erudus One.

We do not accept liability for any inaccuracies or incorrect information contained on this site. Please visit <http://www.erudus.com/terms-and-conditions> for full terms and conditions.

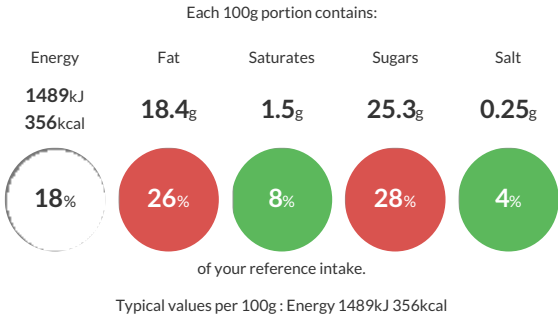
Erlenchbacher Er BananaBread-Vegan- 6x12Prt

Short Product Name:

Banana bread with walnuts and hazelnuts, decorated with redcurrants and a mixture of almonds, walnuts, oatflakes and hazelnuts, covered with cake glaze, quick-frozen, pre-cut into 12 portions.

Traded Unit GTIN: 4004311090435 Internal GTIN: 4004311190432 Supplier : R&R Ice Cream UK Limited Suppliers Product Code : 39000017

Reference Intake



Nutritional Information

Typical Values	Per 100g
Energy	1489kJ 356kCal
Carbohydrates	42.2g
of which sugars	25.3g
Fat	18.4g
of which saturates	1.5g
Fibre	2.2g
Protein	4.3g
Salt	0.25g

Allergy Information

Key: Contains May Contain

Dietary Information

Key: Suitable for

Ingredients

WHEAT flour, sugar, banana puree (12%), rapeseed oil, water, redcurrants (9%), WALNUTS (6%), apple puree, HAZELNUTS (3%), freeze dried banana pieces (3%), ALMONDS (1%), OAT flakes (1%), pregelatinized rice flour, WHEAT semolina, raising agents (E450, E500), acids (E300, E330), gelling agent (E440), acidity regulators (E327, E332), thickeners (E410, E415).