

The information on the [Erudus System](#) has been supplied by the manufacturers of the products and, whilst the owners of the Erudus System take steps to ensure the information is regularly updated, they give no warranty and no guarantee that the information is accurate. Product information and ingredients may change, please always read product labels carefully in addition to using the information provided by Erudus One.

We do not accept liability for any inaccuracies or incorrect information contained on this site. Please visit <http://www.erudus.com/terms-and-conditions> for full terms and conditions.

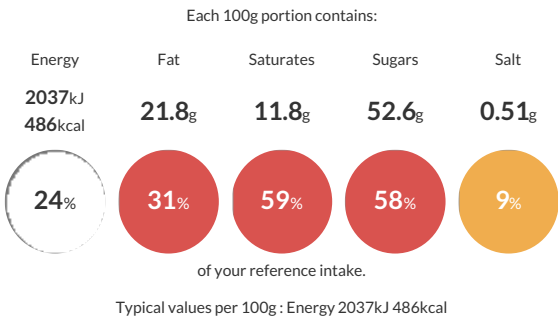
LION Milk Chocolate Bar 36x50g NCP

Short Product Name:
LION 36x50g

Filled wafer with caramel (35.6%) and cereals (8.6%) covered with milk chocolate (38.0%)

Traded Unit GTIN: 07613034989260 Internal GTIN: 7613034989253 Supplier : Nestle UK Suppliers Product Code : 12531410

Reference Intake



Nutritional Information

Typical Values	Per 100g
Energy	2037kJ 486kCal
Carbohydrates	67.1g
of which sugars	52.6g
Fat	21.8g
of which saturates	11.8g
Fibre	1.3g
Protein	4.9g
Salt	0.51g

Allergy Information

Key: Contains May Contain


Contains Cereal/Gluten


Contains Milk


Does Not Contain Eggs


May Contain Peanuts


May Contain Nuts


Does Not Contain Crustaceans


Does Not Contain Mustard


Does Not Contain Fish


Does Not Contain Lupin


Does Not Contain Sesame


Does Not Contain Celery


May Contain Soya


Does Not Contain Molluscs


Does Not Contain Sulphur Dioxide

Dietary Information

Key: Suitable for


May not be suitable for Vegetarian


May not be suitable for Vegan


May not be suitable for Kosher


May not be suitable for Halal


NO DATA for Coeliac

Allergen Statement

Contains: MILK and WHEAT. May Contain: SOYA, NUTS and PEANUTS.

Ingredients

Milk chocolate (38.1%) (sugar, cocoa butter, cocoa mass, skimmed **MILK** powder, whey powder product (**MILK**), butterfat (**MILK**), vegetable fats (palm, shea), emulsifier (lecithins), glucose-fructose syrup, **WHEAT** flour, sweetened condensed **MILK** (**MILK**, sugar), vegetable fat (palm oil), sugar, whey powder (**MILK**), maltodextrin, skimmed **MILK** powder, **WHEAT** starch, salt, emulsifier (lecithins), raising agent (sodium bicarbonate), caramelised sugar, thickener (carageenan).