

The information on the [Erudus System](#) has been supplied by the manufacturers of the products and, whilst the owners of the Erudus System take steps to ensure the information is regularly updated, they give no warranty and no guarantee that the information is accurate. Product information and ingredients may change, please always read product labels carefully in addition to using the information provided by Erudus One.

We do not accept liability for any inaccuracies or incorrect information contained on this site. Please visit <http://www.erudus.com/terms-and-conditions> for full terms and conditions.

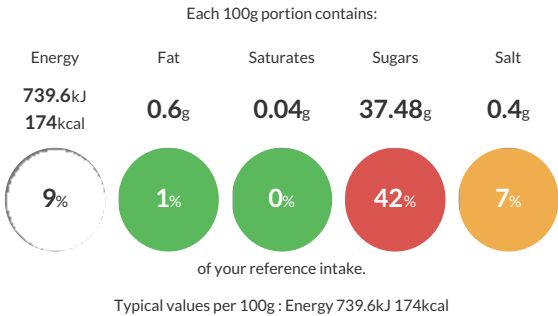
Fig and Apple Chutney with Bishops Finger Ale 1.2kg

Short Product Name:
Fig and Apple Chutney with Bishops Finger Ale

Fig and Apple Chutney with Bishops Finger Ale in 1.2kg catering plastic tub

Traded Unit GTIN:  Internal GTIN:  Supplier :  Suppliers Product Code : 

Reference Intake



Nutritional Information

Typical Values	Per 100g
Energy	739.6kJ 174kCal
Carbohydrates	41g
of which sugars	37.48g
Fat	0.6g
of which saturates	0.04g
Fibre	1.73g
Protein	1.2g
Salt	0.4g

Allergy Information

Key:  


Contains
Cereal/Gluten


May Contain
Milk


May Contain
Eggs


May Contain
Peanuts


May Contain
Nuts


Does Not
Contain
Crustaceans


May Contain
Mustard


Does Not
Contain
Fish


Does Not
Contain
Lupin


Does Not
Contain
Sesame


May Contain
Celery


Does Not
Contain
Soya


Does Not
Contain
Molluscs


Does Not
Contain
Sulphur
Dioxide

Dietary Information

Key: 


Suitable for
Vegetarian


Suitable for
Vegan


May not be
suitable for
Kosher


May not be
suitable for
Halal


NO DATA for
Coeliac

Ingredients

Bramley Apples (25%), Sugar, Onions, Figs (13%), Raisins, Dates, Vinegar, Bishop's Finger Ale (4%)(**BARLEY**), Salt, Cardamom, Paprika, Nutmeg