

The information on the [Erudus System](#) has been supplied by the manufacturers of the products and, whilst the owners of the Erudus System take steps to ensure the information is regularly updated, they give no warranty and no guarantee that the information is accurate. Product information and ingredients may change, please always read product labels carefully in addition to using the information provided by Erudus One.

We do not accept liability for any inaccuracies or incorrect information contained on this site. Please visit <http://www.erudus.com/terms-and-conditions> for full terms and conditions.

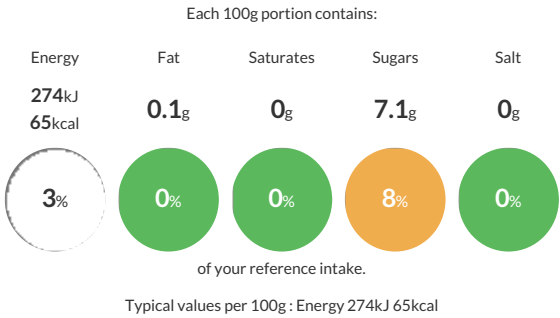
# Royal Crown Plum Halves in Light Syrup 6x2.6kg

Short Product Name:  
Plum Halves in Light Syrup

Canned plum halves prepared from fresh, clean and mature fruit and packed in Sugar Syrup. The product is hermetically sealed and commercially sterile

Traded Unit GTIN: 05010227218565 Internal GTIN: 5010227218459 Supplier : Kiril Mischeff Ltd Suppliers Product Code : 40020100

## Reference Intake



## Nutritional Information

Typical Values	Per 100g
Energy	274kJ 65kCal
Carbohydrates	15.5g
of which sugars	7.1g
Fat	0.1g
of which saturates	0g
Fibre	0.7g
Protein	0.3g
Salt	0g

## Allergy Information

Key: Contains May Contain

  
Does Not Contain Cereal/Gluten

  
Does Not Contain Milk

  
Does Not Contain Eggs

  
Does Not Contain Peanuts

  
Does Not Contain Nuts

  
Does Not Contain Crustaceans

  
Does Not Contain Mustard

  
Does Not Contain Fish

  
Does Not Contain Lupin

  
Does Not Contain Sesame

  
Does Not Contain Celery

  
Does Not Contain Soya

  
Does Not Contain Molluscs

  
Does Not Contain Sulphur Dioxide

## Dietary Information

Key: Suitable for

  
Suitable for Vegetarian

  
Suitable for Vegan

  
Suitable for Kosher

  
Suitable for Halal

  
NO DATA for Coeliac

## Ingredients

Plums (57.7%), Water (35.9%), Sugar (6.3%), Acidity Regulator - Citric Acid (0.04%), Firming Agent - Calcium Chloride (0.03%)