

The information on the [Erudus System](#) has been supplied by the manufacturers of the products and, whilst the owners of the Erudus System take steps to ensure the information is regularly updated, they give no warranty and no guarantee that the information is accurate. Product information and ingredients may change, please always read product labels carefully in addition to using the information provided by Erudus One.

We do not accept liability for any inaccuracies or incorrect information contained on this site. Please visit <http://www.erudus.com/terms-and-conditions> for full terms and conditions.

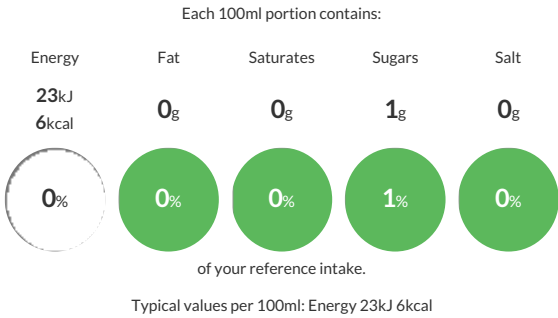
Robinsons Peach and Mango 12 x 500ml

Short Product Name:
Still No Added Sugar Peach and Mango Juice Drink with Sweeteners

Contains Artificial Sweetener(s) Contains Natural Flavouring(s) Contains Preservatives Suitable for vegetarians and vegans

Traded Unit GTIN: 05010102233584 Internal GTIN: 5010102243736 Supplier : Britvic Soft Drinks Limited Suppliers Product Code : 250785

Reference Intake



Nutritional Information

Typical Values	Per 100ml
Energy	23kJ 6kCal
Carbohydrates	1g
of which sugars	1g
Fat	0g
of which saturates	0g
Fibre	-g
Protein	0g
Salt	0g

Allergy Information

Key: Contains May Contain


Does Not Contain Cereal/Gluten


Does Not Contain Milk


Does Not Contain Eggs


Does Not Contain Peanuts


Does Not Contain Nuts


Does Not Contain Crustaceans


Does Not Contain Mustard


Does Not Contain Fish


Does Not Contain Lupin


Does Not Contain Sesame


Does Not Contain Celery


Does Not Contain Soya


Does Not Contain Molluscs


Does Not Contain Sulphur Dioxide

Dietary Information

Key: Suitable for


Suitable for Vegetarian


Suitable for Vegan


Suitable for Kosher


Suitable for Halal


NO DATA for Coeliac

Ingredients

Water, Fruit Juices from Concentrate (Peach 6%, Mango 3%), Acid (Citric Acid), Natural Peach Flavouring with other Natural Flavourings, Antioxidant (Ascorbic Acid), Acidity Regulator (Sodium Citrate), Natural Colour (Carotenes), Carrot and Apple Concentrate, Sweeteners (Sucralose, Acesulfame K), Stabiliser (Cellulose Gum).