

The information on the [Erudus System](#) has been supplied by the manufacturers of the products and, whilst the owners of the Erudus System take steps to ensure the information is regularly updated, they give no warranty and no guarantee that the information is accurate. Product information and ingredients may change, please always read product labels carefully in addition to using the information provided by Erudus One.

We do not accept liability for any inaccuracies or incorrect information contained on this site. Please visit <http://www.erudus.com/terms-and-conditions> for full terms and conditions.

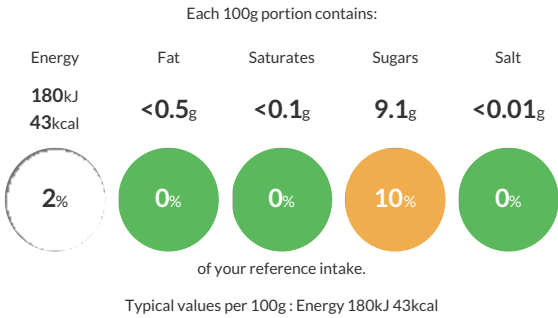
Gooseberry in Light Syrup 6x3kg Royal Crown

Short Product Name:
Gooseberry in Light Syrup

Pasteurised gooseberries immersed in light syrup

Traded Unit GTIN: 05010227284232 Internal GTIN: 5010227284126 Supplier : Kiril Mischeff Ltd Suppliers Product Code : 40180600

Reference Intake



Nutritional Information

Typical Values	Per 100g
Energy	180kJ 43kCal
Carbohydrates	9.1g
of which sugars	9.1g
Fat	<0.5g
of which saturates	<0.1g
Fibre	2g
Protein	0.5g
Salt	<0.01g

Allergy Information

Key: Contains May Contain


Does Not Contain Cereal/Gluten


Does Not Contain Milk


Does Not Contain Eggs


Does Not Contain Peanuts


Does Not Contain Nuts


Does Not Contain Crustaceans


Does Not Contain Mustard


Does Not Contain Fish


Does Not Contain Lupin


Does Not Contain Sesame


Does Not Contain Celery


Does Not Contain Soya


Does Not Contain Molluscs


Does Not Contain Sulphur Dioxide

Allergen Statement
No gluten containing ingredients but not positive released as gluten free.

Ingredients

gooseberries, water, sugar

Dietary Information

Key: Suitable for


Suitable for Vegetarian


May not be suitable for Vegan


May not be suitable for Kosher


May not be suitable for Halal


NO DATA for Coeliac