

The information on the [Erudus System](#) has been supplied by the manufacturers of the products and, whilst the owners of the Erudus System take steps to ensure the information is regularly updated, they give no warranty and no guarantee that the information is accurate. Product information and ingredients may change, please always read product labels carefully in addition to using the information provided by Erudus One.

We do not accept liability for any inaccuracies or incorrect information contained on this site. Please visit <http://www.erudus.com/terms-and-conditions> for full terms and conditions.

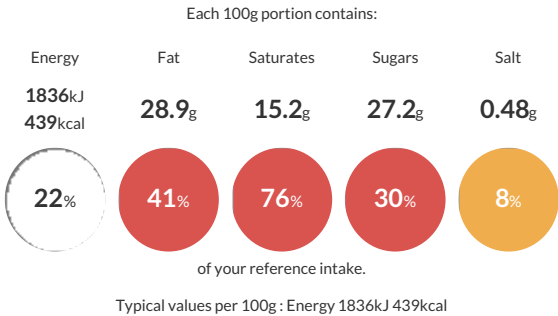
Honeycomb Golden Nugget Cheesecake 9" - 14 Cut

Short Product Name:
Honeycomb Golden Nugget Cheesecake

Deliciously smooth and creamy vanilla cheesecake on a crunchy biscuit base filled with milk chocolate drops and topped with loads more crunchy chocolate honeycomb nuggets and golden honeycomb shards

Traded Unit GTIN: - Internal GTIN: 5029872007738 Supplier : The English Cheesecake Company Suppliers Product Code : N327

Reference Intake



Nutritional Information

Typical Values	Per 100g
Energy	1836kJ 439kCal
Carbohydrates	41.2g
of which sugars	27.2g
Fat	28.9g
of which saturates	15.2g
Fibre	0.79g
Protein	3.7g
Salt	0.48g

Allergy Information

Key: Contains May Contain


Contains Cereal/Gluten


Contains Milk


May Contain Eggs


Does Not Contain Peanuts


May Contain Nuts


Does Not Contain Crustaceans


Does Not Contain Mustard


Does Not Contain Fish


Does Not Contain Lupin


Does Not Contain Sesame


Does Not Contain Celery


Contains Soya


Does Not Contain Molluscs


May Contain Sulphur Dioxide

Dietary Information

Key: Suitable for


Suitable for Vegetarian


May not be suitable for Vegan


May not be suitable for Kosher


May not be suitable for Halal


May not be suitable for Coeliac

Allergen Statement
Produced in a factory that handles Wheat Gluten, Milk, Egg, Nuts , Soya and Sulphites.

Ingredients

Biscuit Base (25%) [Fortified **WHEAT** Flour (**WHEAT** Flour, Calcium Carbonate, Iron, Thiamin, Niacin), Vegetable Oils (SG **RSPO** Palm, Rapeseed), Sugar, Invert Sugar Syrup, Raising Agents E500ii, E503ii, Salt], Double Cream (**MILK**), **MILK** Chocolate Honeycomb (12%) [Sugar, Cocoa Butter, Cocoa Mass, Skimmed **MILK** Powder, **MILK** Sugar, Whey Powder (**MILK**), Anhydrous **MILK** Fat, Emulsifier **SOYA** Lecithin (E322), Glucose Syrup, Water, Raising Agent Sodium Bicarbonate (E500ii), Glazing Agent Gum Arabic (E414), Sucrose, Honey], Reduced Fat Soft Cheese (**MILK**) (10%) [Skimmed **MILK**, Cream, Permeate, Salt, Tapioca Starch, Xanthan Gum, Locust Bean Gum, Bacterial Starter Culture], **MILK** Chocolate Honeycomb Granules (6%) [Sugar, Cocoa Butter, Cocoa Mass, Skimmed **MILK** Powder, **MILK** Sugar, Whey Powder (**MILK**), Anhydrous **MILK** Fat, Emulsifier **SOYA** Lecithin, Glucose Syrup, Water, Raising Agent Sodium Bicarbonate (E500ii), Non-Hydrogenated Vegetable Fat SG (Shea Oil, Palm Oil, Emulsifier **SOYA** Lecithin (E322))], Butter (**MILK**), Sugar, Cocoa Butter, Modified Starch (Maize), Tapioca Starch, Natural Vanilla Flavouring, Preservative (Potassium Sorbate (E202)).