

The information on the [Erudus System](#) has been supplied by the manufacturers of the products and, whilst the owners of the Erudus System take steps to ensure the information is regularly updated, they give no warranty and no guarantee that the information is accurate. Product information and ingredients may change, please always read product labels carefully in addition to using the information provided by Erudus One.

We do not accept liability for any inaccuracies or incorrect information contained on this site. Please visit <http://www.erudus.com/terms-and-conditions> for full terms and conditions.

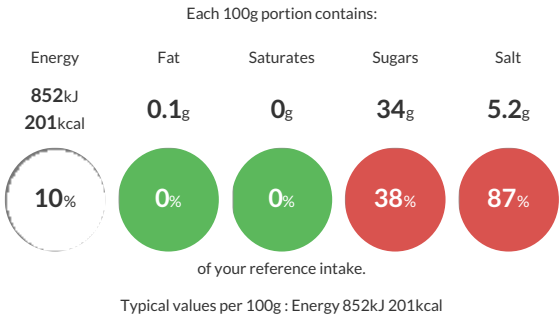
TERIYAKI SAUCE 2kg No.126-330

Short Product Name:
TERIYAKI SAUCE 2kg No.126-330

An authentic, rich tasting and perfect glazing sauce. Contains Tamari, Mirin, Miso for giving distinct flavour and taste add on the dish. No need to marinade, simply add at the end of cooking.

Traded Unit GTIN: 14904131133893 Internal GTIN: 4904131133896 Supplier : Nihon Shokken Holdings Suppliers Product Code : 260385

Reference Intake



Nutritional Information

Typical Values	Per 100g
Energy	852kJ 201kCal
Carbohydrates	46g
of which sugars	34g
Fat	0.1g
of which saturates	0g
Fibre	-g
Protein	3.7g
Salt	5.2g

Allergy Information

Key: Contains May Contain



Contains Cereal/Gluten



Does Not Contain Milk



Does Not Contain Eggs



Does Not Contain Peanuts



Does Not Contain Nuts



Does Not Contain Crustaceans



Does Not Contain Mustard



Does Not Contain Fish



Does Not Contain Lupin



Does Not Contain Sesame



Does Not Contain Celery



Contains Soya



Does Not Contain Molluscs



Does Not Contain Sulphur Dioxide

Dietary Information

Key: Suitable for



May not be suitable for Vegetarian



May not be suitable for Vegan



May not be suitable for Kosher



May not be suitable for Halal



NO DATA for Coeliac

Ingredients

sugar, hydrolysed protein (soy bean protein, wheat gluten, corn gluten, salt), sweet rice wine (glutinous rice, glucose, malted rice, alcohol), water, soy sauce (soy beans, salt, wheat, glucose, barley), modified starch, brown sugar syrup (brown sugar, raw sugar, glucose syrup, water), spirit vinegar, colour [E150a], miso (barley, soy beans, salt), yeast extract, ginger.