

The information on the [Erudus System](#) has been supplied by the manufacturers of the products and, whilst the owners of the Erudus System take steps to ensure the information is regularly updated, they give no warranty and no guarantee that the information is accurate. Product information and ingredients may change, please always read product labels carefully in addition to using the information provided by Erudus One.

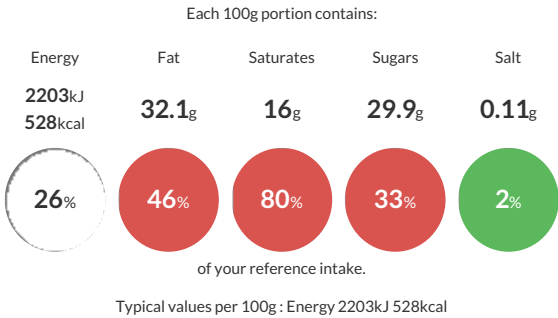
We do not accept liability for any inaccuracies or incorrect information contained on this site. Please visit <http://www.erudus.com/terms-and-conditions> for full terms and conditions.

GF Caramel Shortbread (1 x 18)

Individually wrapped. Crumbly shortbread base layered with thick caramel, all topped with dark chocolate. Wheat, gluten and milk-free. Suitable for vegetarians, vegans and coeliacs. Defrosted shelf-life = 28 days. (1 x 18)

Traded Unit GTIN: 05028931106566 Internal GTIN: 5028931006569 Supplier : Central Foods Group Ltd Suppliers Product Code : WLC0656

Reference Intake



Nutritional Information

Typical Values	Per 100g
Energy	2203kJ 528kCal
Carbohydrates	56.6g
of which sugars	29.9g
Fat	32.1g
of which saturates	16g
Fibre	1.4g
Protein	2.3g
Salt	0.11g

Allergy Information

Key: Contains May Contain

Gluten < 20ppm
Does Not Contain Cereal/Gluten

Does Not Contain Milk

May Contain Eggs

Does Not Contain Peanuts

May Contain Nuts

Does Not Contain Crustaceans

Does Not Contain Mustard

Does Not Contain Fish

Does Not Contain Lupin

Does Not Contain Sesame

Does Not Contain Celery

Does Not Contain Soya

Does Not Contain Molluscs

Does Not Contain Sulphur Dioxide

Dietary Information

Key: Suitable for

Suitable for Vegetarian

Suitable for Vegan

May not be suitable for Kosher

May not be suitable for Halal

Suitable for Coeliac

Gluten Claim
Gluten content is less than 20ppm.

Ingredients

Shortbread (Rice Flour, Brown Rice Flour, Palm Oil, Sugar, Brown Sugar, Rapeseed Oil, Tapioca Starch, Water, Flavouring, Thickener (Xanthan Gum), Raising Agents (Calcium Phosphate, Sodium Bicarbonate), Salt, Emulsifier (Mono- and Diglycerides of Fatty Acids), Colour (Plain Caramel)), Caramel (37%) (Golden Syrup, Cocoa Butter, Sugar, Rice Syrup, Rice Starch, Rice Flour, Flavouring, Colour (Plain Caramel), Salt), Dark Chocolate (17%) (Cocoa Mass, Cocoa Butter, Sugar, Emulsifier (Sunflower Lecithin)), Glucose Syrup.