

The information on the [Erudus System](#) has been supplied by the manufacturers of the products and, whilst the owners of the Erudus System take steps to ensure the information is regularly updated, they give no warranty and no guarantee that the information is accurate. Product information and ingredients may change, please always read product labels carefully in addition to using the information provided by Erudus One.

We do not accept liability for any inaccuracies or incorrect information contained on this site. Please visit <http://www.erudus.com/terms-and-conditions> for full terms and conditions.

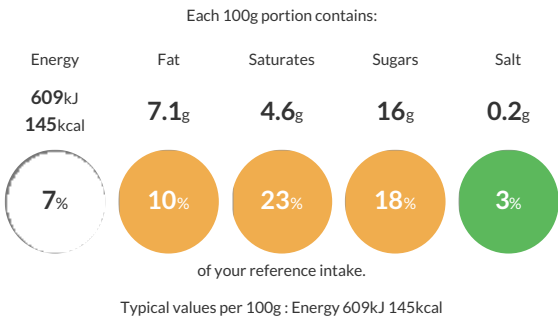
Jude's Speculoos Ice Cream - 6 x 4L

Short Product Name:
Jude's Speculoos Ice Cream - 6 x 4L

Speculoos Flavoured Ice Cream With a Spiced Caramelised Biscuit Crumb And Caramel Sauce

Traded Unit GTIN: - Internal GTIN: 5060081116330 Supplier : Jude's Ices Suppliers Product Code : FI0218

Reference Intake



Nutritional Information

Typical Values	Per 100g
Energy	609kJ 145kCal
Carbohydrates	18g
of which sugars	16g
Fat	7.1g
of which saturates	4.6g
Fibre	-g
Protein	2.9g
Salt	0.2g

Allergy Information

Key: Contains May Contain


Contains Cereal/Gluten


Contains Milk


Contains Eggs


Does Not Contain Peanuts


Does Not Contain Nuts


Does Not Contain Crustaceans


Does Not Contain Mustard


Does Not Contain Fish


Does Not Contain Lupin


Does Not Contain Sesame


Does Not Contain Celery


Does Not Contain Soya


Does Not Contain Molluscs


Does Not Contain Sulphur Dioxide

Dietary Information

Key: Suitable for


Suitable for Vegetarian


May not be suitable for Vegan


May not be suitable for Kosher


May not be suitable for Halal


NO DATA for Coeliac

Allergen Statement
For allergens see ingredients in bold.

Ingredients

fresh whole **milk**, sugar, caramel sauce (10.3%) [sweetened condensed skimmed **milk**, sugar, water, glucose syrup, butter (**milk**), salt], double cream (**milk**), skimmed **milk** powder, caramelised biscuit crumb (3.4%) [(**wheat** flour, sugar, vegetable oil SG (palm, rapeseed), invert sugar syrup, salt, cinnamon), non-hydrogenated vegetable fat SG (palm oil)], dextrose, coconut oil, emulsifier (mono- and diglycerides of fatty acids), stabilisers (locust bean gum, guar gum), colour (plain caramel), natural speculoos biscuit flavouring, pasteurised free range **egg** yolk.