

The information on the [Erudus System](#) has been supplied by the manufacturers of the products and, whilst the owners of the Erudus System take steps to ensure the information is regularly updated, they give no warranty and no guarantee that the information is accurate. Product information and ingredients may change, please always read product labels carefully in addition to using the information provided by Erudus One.

We do not accept liability for any inaccuracies or incorrect information contained on this site. Please visit <http://www.erudus.com/terms-and-conditions> for full terms and conditions.

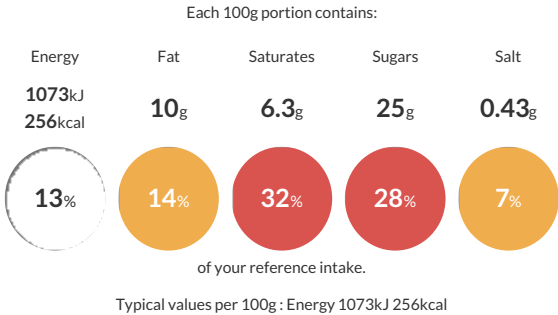
Black Forest Gateau 2 Layer Gateau

Short Product Name:
Black Forest Gateau

Two layers of fluffy chocolate sponge sandwiched with whipped cream, covered with whipped cream and topped with a piped crown of whipped cream rosettes with a cherry sauce center studded with whole cherries. Decorated on all sides with chocolate flavour chips.

Traded Unit GTIN: 05010823521922 Internal GTIN: Supplier : Mademoiselle Desserts (Taunton) Suppliers Product Code : F00020

Reference Intake



Nutritional Information

Typical Values	Per 100g
Energy	1073kJ 256kCal
Carbohydrates	37g
of which sugars	25g
Fat	10g
of which saturates	6.3g
Fibre	1.6g
Protein	3.6g
Salt	0.43g

Allergy Information

Key: Contains May Contain


Contains Cereal/Gluten


Contains Milk


Contains Eggs


Does Not Contain Peanuts


May Contain Nuts


Does Not Contain Crustaceans


Does Not Contain Mustard


Does Not Contain Fish


Does Not Contain Lupin


Does Not Contain Sesame


Does Not Contain Celery


Contains Soya


Does Not Contain Molluscs


Does Not Contain Sulphur Dioxide

Dietary Information

Key: Suitable for


Suitable for Vegetarian


May not be suitable for Vegan


May not be suitable for Kosher


May not be suitable for Halal


NO DATA for Coeliac

Ingredients

Cream (MILK) (21%), Water, Sugar, Cherries (11%), WHEAT Flour (WHEAT Flour, Calcium Carbonate, Niacin, Iron, Thiamin), EGG, Glucose Syrup, Fat Reduced Cocoa Powder (2%), Dextrose, Cocoa Mass, Cherry Juice Concentrate, Modified Maize Starch, Raising Agents (Sodium Bicarbonate, Disodium Diphosphate), Whey Powder (MILK), Skimmed MILK Powder, Cocoa Butter, Modified Potato Starch, WHEAT Flour, Acidity Regulators (Citric Acid, Potassium Hydroxide), Emulsifiers (Mono- and Diglycerides of Fatty Acids, Polyglycerol Esters of Fatty Acids, SOYA Lecithin, Buttermilk Powder (MILK), Stabilisers (Xanthan Gum, Guar Gum, Carrageenan), Colours (Anthocyanins, Curcumin), Natural Flavouring.