



The information on the [Erudus System](#) has been supplied by the manufacturers of the products and, whilst the owners of the Erudus System take steps to ensure the information is regularly updated, they give no warranty and no guarantee that the information is accurate. Product information and ingredients may change, please always read product labels carefully in addition to using the information provided by Erudus One.

We do not accept liability for any inaccuracies or incorrect information contained on this site. Please visit <http://www.erudus.com/terms-and-conditions> for full terms and conditions.

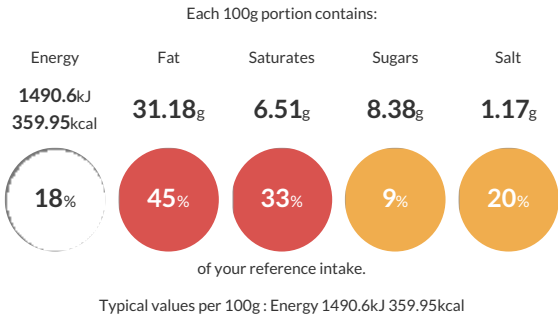
Purple Pineapple Brie, Cheddar and Red Onion Marmalade 1kg

Short Product Name:  
Brie, Cheddar and Red Onion Marmalade

Diced Brie and Mature Cheddar cheeses and red onion marmalade

Traded Unit GTIN:  Internal GTIN:  Supplier:  Suppliers Product Code: 

Reference Intake



Nutritional Information

Typical Values	Per 100g
Energy	1490.6kJ 359.95kCal
Carbohydrates	9.67g
of which sugars	8.38g
Fat	31.18g
of which saturates	6.51g
Fibre	0.49g
Protein	10.03g
Salt	1.17g

Allergy Information

Key:  Contains  May Contain

  
Does Not Contain Cereal/Gluten

  
Contains Milk


  
Contains Eggs

  
Does Not Contain Peanuts

  
Does Not Contain Nuts

  
Does Not Contain Crustaceans

  
Does Not Contain Mustard

  
Does Not Contain Fish

  
Does Not Contain Lupin

  
Does Not Contain Sesame

  
Does Not Contain Celery

  
Does Not Contain Soya

  
Does Not Contain Molluscs

  
Does Not Contain Sulphur Dioxide

Gluten Claim  
Gluten content is less than 20ppm.

Ingredients

Red Onion Marmalade 30% (red onions, sugar, vinegar, salt, black pepper, agar) Mature White Cheddar 25% (Milk, Salt, Starter, Rennet, anti-caking agent [E552]) (**MILK**) Free Range Real Mayonnaise 25% (Rapeseed Oil, Water, Sugar, Stabiliser: Modified Maize Starch (E1422). Preservative: Acetic Acid (E260). Pasteurised Free Range Egg Yolk Powder, Stabiliser: Xanthan Gum (E415). Salt, Preservative: Potassium Sorbate (E202), Lutein (E161b) (**EGGS**)) Brie 20% (Milk, Salt (E535/E536), Microbial Coagulant (E211), Lactic & ripening ferment, Calcium chloride (E509) (**MILK**)).

Dietary Information

Key:  Suitable for

  
Suitable for Vegetarian

  
May not be suitable for Vegan

  
May not be suitable for Kosher

  
May not be suitable for Halal

  
Suitable for Coeliac