

The information on the [Erudus System](#) has been supplied by the manufacturers of the products and, whilst the owners of the Erudus System take steps to ensure the information is regularly updated, they give no warranty and no guarantee that the information is accurate. Product information and ingredients may change, please always read product labels carefully in addition to using the information provided by Erudus One.

We do not accept liability for any inaccuracies or incorrect information contained on this site. Please visit <http://www.erudus.com/terms-and-conditions> for full terms and conditions.

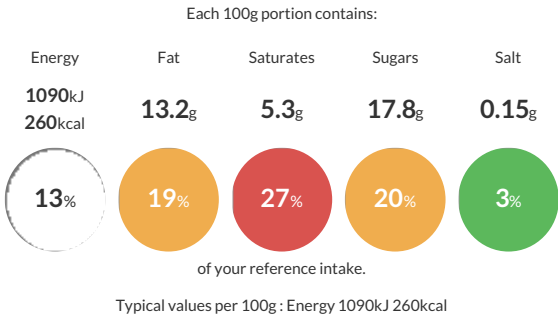
Strawberry Cheesecake; Whole

Short Product Name:
Strawberry Cheesecake

A crunchy digestive biscuit base topped with a creamy vanilla flavour cheesecake and topped with a strawberry fruit topping. Sold uncut.

Traded Unit GTIN: 05010823522820 Internal GTIN: 5010823105627 Supplier : Mademoiselle Desserts (Taunton) Suppliers Product Code : F31341

Reference Intake



Nutritional Information

Typical Values	Per 100g
Energy	1090kJ 260kCal
Carbohydrates	31.3g
of which sugars	17.8g
Fat	13.2g
of which saturates	5.3g
Fibre	0.9g
Protein	3.9g
Salt	0.15g

Allergy Information

Key: Contains May Contain


Contains Cereal/Gluten


Contains Milk


Contains Eggs


Does Not Contain Peanuts


May Contain Nuts


Does Not Contain Crustaceans


Does Not Contain Mustard


Does Not Contain Fish


Does Not Contain Lupin


Does Not Contain Sesame


Does Not Contain Celery


Does Not Contain Soya


Does Not Contain Molluscs


Does Not Contain Sulphur Dioxide

Dietary Information

Key: Suitable for


Suitable for Vegetarian


May not be suitable for Vegan


May not be suitable for Kosher


May not be suitable for Halal


NO DATA for Coeliac

Ingredients

Digestive Biscuit (18%) (Wheat Flour (WHEAT Flour, Calcium Carbonate, Iron, Nicotinamide, Thiamin), Vegetable Oil (Palm, Rapeseed), Sugar, Wholemeal WHEAT Flour, Invert Sugar Syrup, Raising Agent (Ammonium Bicarbonate)), Water, Low Fat Fromage Frais (MILK), Strawberries (13%), Sugar, Margarine (Vegetable Oil (Palm, Rapeseed), Water, Emulsifier (Mono- and Diglycerides of Fatty Acids)), Full Fat Soft Cheese (4.6%) (Cream (MILK), Water, Skimmed MILK Powder, Cornflour, BUTTERMILK Powder, Salt), Cream (MILK), Glucose Syrup, EGG, Modified Maize Starch, Wheat Flour (WHEAT Flour, Calcium Carbonate, Iron, Niacin, Thiamin), Strawberry Puree, Acidity Regulators (Citric Acid, Trisodium Citrate, Lactic Acid), Thickener (Pectin), Natural Flavouring, Stabilisers (Xanthan Gum, Locust Bean Gum, Guar Gum), Colours (Anthocyanins, Algal Carotenes).