

The information on the [Erudus System](#) has been supplied by the manufacturers of the products and, whilst the owners of the Erudus System take steps to ensure the information is regularly updated, they give no warranty and no guarantee that the information is accurate. Product information and ingredients may change, please always read product labels carefully in addition to using the information provided by Erudus One.

We do not accept liability for any inaccuracies or incorrect information contained on this site. Please visit <http://www.erudus.com/terms-and-conditions> for full terms and conditions.

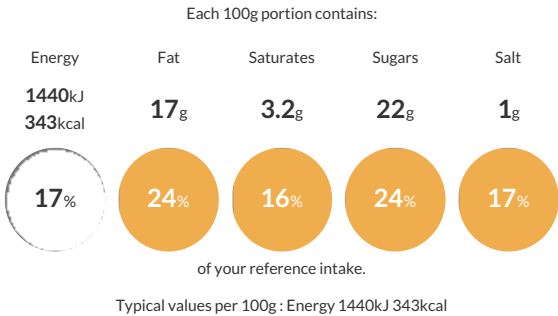
# Benugo Raspberry & White Chocolate Muffin 118g

Short Product Name:  
Raspberry & White Chocolate Muffin

Muffin containing raspberries and white chocolate chunks.

Traded Unit GTIN:  Internal GTIN: Supplier : [Queensland Bakery Co. \(Fulfil Ltd\)](#) Suppliers Product Code : [9028-12](#)

## Reference Intake



## Nutritional Information

Typical Values	Per 100g
Energy	1440kJ 343kCal
Carbohydrates	46g
of which sugars	22g
Fat	17g
of which saturates	3.2g
Fibre	1.2g
Protein	3.9g
Salt	1g

## Allergy Information

Key: Contains May Contain

  
Contains Cereal/Gluten

  
Contains Milk

  
Contains Eggs

  
Does Not Contain Peanuts

  
May Contain Nuts

  
Does Not Contain Crustaceans

  
Does Not Contain Mustard

  
Does Not Contain Fish

  
Does Not Contain Lupin

  
Does Not Contain Sesame

  
Does Not Contain Celery

  
Contains Soya

  
Does Not Contain Molluscs

  
Does Not Contain Sulphur Dioxide

## Dietary Information

Key: Suitable for

  
Suitable for Vegetarian

  
May not be suitable for Vegan

  
May not be suitable for Kosher

  
May not be suitable for Halal

  
May not be suitable for Coeliac

**Allergen Statement**  
Made in a factory that handles nuts and may contain fruit stalks and/or stones.

## Ingredients

Muffin Base (Wheat Flour (**WHEAT**, Calcium Carbonate, Iron, Niacin, Thiamin), Sugar, Whole **EGG** Powder, Raising Agents (Disodium Diphosphate, Sodium Bicarbonate), **WHEAT** Starch, Dextrose, Emulsifier (E471), Salt, Rapeseed Oil, Dried **EGG** White, Preservative (Potassium Sorbate), Citric Acid, Stabiliser (Xanthan Gum)), Water, Vegetable Oil (Rapeseed), Raspberries (12%), Glycerine, White Chocolate Chunks (4%) (Sugar, Whole **MILK** Powder, Cocoa Butter, Skimmed **MILK** Powder, Emulsifier (**SOYA** Lecithin), Vanilla Flavouring), Raspberry Flavouring.