

Supplier's Product Code :
Product Added :
Last Updated by Supplier :
erudus id :

012256P
26 May 2026
27 May 2026
e84028265fd64616ba8700efb2b38962



The information on the **Erudus System** has been supplied by the manufacturers of the products and, whilst the owners of the Erudus System take steps to ensure the information is regularly updated, they give no warranty and no guarantee that the information is accurate. Product information and ingredients may change, please always read product labels carefully in addition to using the information provided by Erudus One.

We do not accept liability for any inaccuracies or incorrect information contained on this site. Please visit <http://www.erudus.com/terms-and-conditions> for full terms and conditions.

Purple Pineapple Chilli Beef 2.5kg

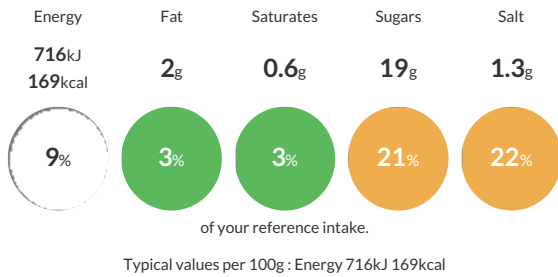
Short Product Name:
Chilli Beef

Shredded beef and red kidney beans in a sweet chilli sauce

Traded Unit GTIN: Internal GTIN: Supplier: **Kff Ltd** Suppliers Product Code: **012256P**

Reference Intake

Each 100g portion contains:



Nutritional Information

Typical Values	Per 100g
Energy	716kJ 169kCal
Carbohydrates	23g
of which sugars	19g
Fat	2g
of which saturates	0.6g
Fibre	1.4g
Protein	14g
Salt	1.3g

Allergy Information

Key: **Contains** **May Contain**



Dietary Information

Key: **Suitable for**



Ingredients

Beef Brisket (40%) [Beef, Salt], Chunky Sweet Chilli Sauce (30%) [Water, Sugar, Spirit Vinegar, Tomato Paste, Golden Syrup, Thickener (E1422 Modified Starch), Salt, Red Pepper Flake, Onion Kibbled, Spice (Cayenne, Ginger), Garlic, Herb (Oregano), Paprika (E160c)], Red Kidney Beans (15%) [Red Kidney Beans, Water, Firming Agent (Calcium Chloride)], Sweet Chilli Sauce (15%) [Glucose Fructose Syrup, Sugar, Water, Spirit Vinegar, Modified Starch, Garlic Puree (Water, Dried Garlic, Acidity Regulator (Citric Acid)), Salt, Dried Garlic, Birds Eye Chillies, Dried Red Pepper, Crushed Chilli, Preservative (Potassium Sorbate)]

ALLERGY ADVICE: For allergens, see ingredients in Bold