

The information on the [Erudus System](#) has been supplied by the manufacturers of the products and, whilst the owners of the Erudus System take steps to ensure the information is regularly updated, they give no warranty and no guarantee that the information is accurate. Product information and ingredients may change, please always read product labels carefully in addition to using the information provided by Erudus One.

We do not accept liability for any inaccuracies or incorrect information contained on this site. Please visit <http://www.erudus.com/terms-and-conditions> for full terms and conditions.

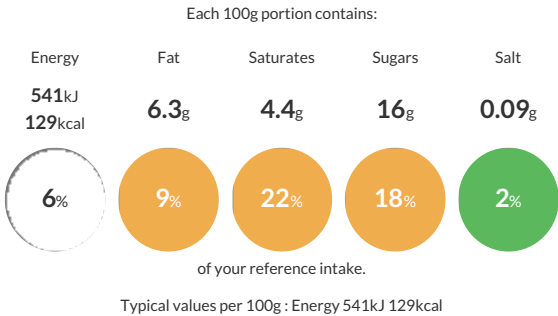
Jude's Strawberries & Cream Ice Cream - 24 x 100ml

Short Product Name:
Strawberries & Cream Ice Cream

Judes Strawberries & Cream Ice Cream

Traded Unit GTIN: 05060081112448 Internal GTIN: 5060081112592 Supplier : Judes Ices Suppliers Product Code : FI0234

Reference Intake



Nutritional Information

Typical Values	Per 100g
Energy	541kJ 129kCal
Carbohydrates	16g
of which sugars	16g
Fat	6.3g
of which saturates	4.4g
Fibre	-g
Protein	2.5g
Salt	0.09g

Allergy Information

Key: Contains May Contain


Does Not Contain Cereal/Gluten


Contains Milk


Contains Eggs


May Contain Peanuts


May Contain Nuts


Does Not Contain Crustaceans


Does Not Contain Mustard


Does Not Contain Fish


Does Not Contain Lupin


Does Not Contain Sesame


Does Not Contain Celery


Does Not Contain Soya


Does Not Contain Molluscs


Does Not Contain Sulphur Dioxide

Allergen Statement

For allergens see ingredients in **BOLD**. May also contain **NUTS** and **PEANUT**.

Ingredients

fresh whole **milk**, sugar, strawberry puree (12%), strawberries in syrup (10%) [strawberries (56%), sugar, water, gelling agent (pectin)], fresh double cream (**milk**) (9%), skimmed **milk powder**, coconut oil, pasteurised free range **egg yolk**, colour (red beet extract), natural flavouring, spirulina extract, dextrose, citric acid, emulsifier (mono- and diglycerides of fatty acids), stabilisers (locust bean gum, guar gum), water

Dietary Information

Key: Suitable for


Suitable for Vegetarian


NO DATA for Vegan


May not be suitable for Kosher


May not be suitable for Halal


NO DATA for Coeliac