

The information on the [Erudus System](#) has been supplied by the manufacturers of the products and, whilst the owners of the Erudus System take steps to ensure the information is regularly updated, they give no warranty and no guarantee that the information is accurate. Product information and ingredients may change, please always read product labels carefully in addition to using the information provided by Erudus One.

We do not accept liability for any inaccuracies or incorrect information contained on this site. Please visit <http://www.erudus.com/terms-and-conditions> for full terms and conditions.

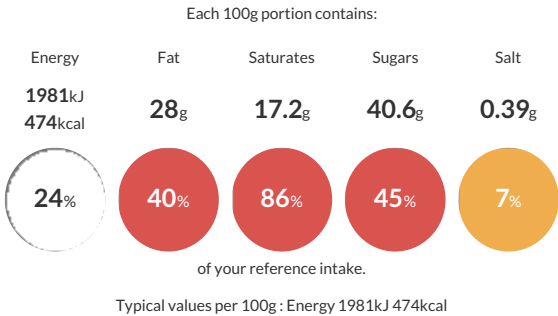
CLASSIC CHOCOLATE BROWNIE (1 x 12 ptn)

Short Product Name:
CHOCOLATE BROWNIE

A rich chocolate fudge brownie.

Traded Unit GTIN: 5060044074363 Internal GTIN: Supplier: The Handmade Cake Co. Suppliers Product Code: 074363

Reference Intake



Nutritional Information

Typical Values	Per 100g
Energy	1981kJ 474kCal
Carbohydrates	48.3g
of which sugars	40.6g
Fat	28g
of which saturates	17.2g
Fibre	4.1g
Protein	5.4g
Salt	0.39g

Allergy Information

Key: Contains May Contain


Contains
Cereal/Gluten


Contains
Milk


Contains
Eggs


Does Not
Contain
Peanuts


May Contain
Nuts


Does Not
Contain
Crustaceans


Does Not
Contain
Mustard


Does Not
Contain
Fish


Does Not
Contain
Lupin


Does Not
Contain
Sesame


Does Not
Contain
Celery


Contains
Soya


Does Not
Contain
Molluscs


Does Not
Contain
Sulphur
Dioxide

Dietary Information

Key: Suitable for


Suitable for
Vegetarian


May not be
suitable for
Vegan


May not be
suitable for
Kosher


May not be
suitable for
Halal


May not be
suitable for
Coeliac

Allergen Statement
For allergens, including cereals containing gluten, see ingredients in **BOLD**. This product may contain traces of nuts as it has been made in a bakery that uses nut ingredients.

Ingredients

Dark Chocolate (27%) [Cocoa Mass, Sugar, Cocoa Butter, Emulsifier (**SOYA** Lecithin), Natural Vanilla Flavouring], Sugar, Butter (**MILK**), Pasteurised Free Range **EGG**, **WHEAT** Flour (with Calcium Carbonate, Niacin, Iron, Thiamin), Fat Reduced Cocoa Powder (3.8%).