



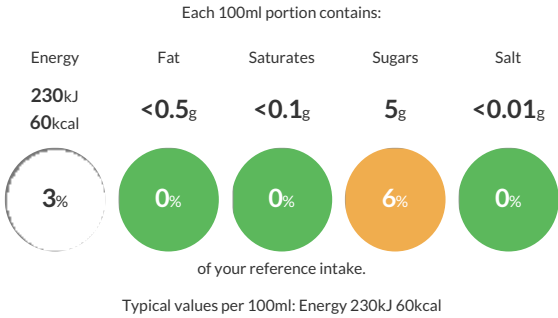
The information on the [Erudus System](#) has been supplied by the manufacturers of the products and, whilst the owners of the Erudus System take steps to ensure the information is regularly updated, they give no warranty and no guarantee that the information is accurate. Product information and ingredients may change, please always read product labels carefully in addition to using the information provided by Erudus One.

We do not accept liability for any inaccuracies or incorrect information contained on this site. Please visit <http://www.erudus.com/terms-and-conditions> for full terms and conditions.

Cuisinewine Mulled Gin & Elderflower 4x3L

Short Product Name:  
Mulled Gin & Elderflower 5.5% ABV  
Traded Unit GTIN:  Internal GTIN: Supplier :  Suppliers Product Code : 


Reference Intake



Nutritional Information


Typical Values	Per 100ml
Energy	230kJ 60kCal
Carbohydrates	8g
of which sugars	5g
Fat	<0.5g
of which saturates	<0.1g
Fibre	-g
Protein	<0.5g
Salt	<0.01g

Allergy Information

Key:  

  
Does Not Contain Cereal/Gluten

  
Does Not Contain Milk

  
Does Not Contain Eggs


  
Does Not Contain Peanuts


  
Does Not Contain Nuts

  
Does Not Contain Crustaceans

  
Does Not Contain Mustard

  
Does Not Contain Fish


  
Does Not Contain Lupin

  
Does Not Contain Sesame

  
Does Not Contain Celery

  
Does Not Contain Soya

  
Does Not Contain Molluscs

  
Contains Sulphur Dioxide

Allergen Statement  
Contains Sulphites

Ingredients

London Gin, Elderflower Cordial, Water, Sugar, Natural Flavouring, Sulphur Dioxide

Dietary Information

Key: 

  
Suitable for Vegetarian

  
Suitable for Vegan

  
May not be suitable for Kosher

  
May not be suitable for Halal

  
Suitable for Coeliac