

Supplier's Product Code :  
 Product Added :  
 Last Updated by Supplier :  
 erudus id :

21269  
 08 April 2026  
 08 April 2026  
 eb66075016a54333aa9ddafb9edb42da



The information on the Erudus System has been supplied by the manufacturers of the products and, whilst the owners of the Erudus System take steps to ensure the information is regularly updated, they give no warranty and no guarantee that the information is accurate. Product information and ingredients may change, please always read product labels carefully in addition to using the information provided by Erudus One.

We do not accept liability for any inaccuracies or incorrect information contained on this site. Please visit <http://www.erudus.com/terms-and-conditions> for full terms and conditions.

## Evaporated Milk 12x 410g

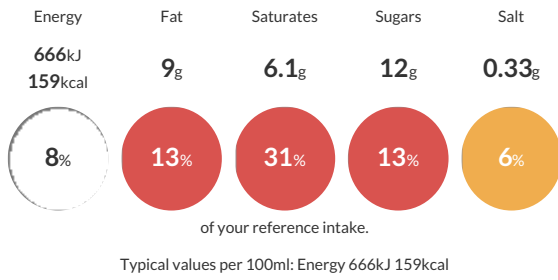
Short Product Name:  
 Evaporated Milk

Canned milk

Traded Unit GTIN: 05020580552664 Internal GTIN: 5020580552657 Supplier: Surya Foods Suppliers Product Code: 21269

### Reference Intake

Each 100ml portion contains:



### Nutritional Information

Typical Values	Per 100ml
Energy	666kJ 159kCal
Carbohydrates	12g
of which sugars	12g
Fat	9g
of which saturates	6.1g
Fibre	-g
Protein	7.6g
Salt	0.33g

### Allergy Information

Key: Contains May Contain

Does Not Contain Cereal/Gluten	Contains Milk	Does Not Contain Eggs	Does Not Contain Peanuts	Does Not Contain Nuts	Does Not Contain Crustaceans	Does Not Contain Mustard
Does Not Contain Fish	Does Not Contain Lupin	Does Not Contain Sesame	Does Not Contain Celery	Does Not Contain Soya	Does Not Contain Molluscs	Does Not Contain Sulphur Dioxide

### Dietary Information

Key: Suitable for

Suitable for Vegetarian	May not be suitable for Vegan	May not be suitable for Kosher	May not be suitable for Halal	NO DATA for Coeliac
-------------------------	-------------------------------	--------------------------------	-------------------------------	---------------------

#### Allergen Statement

ALLERGY ADVICE: FOR ALLERGENS, SEE INGREDIENTS IN BOLD.

### Ingredients

MILK (100%), Stabilisers (E332, E339), Vitamin D