

The information on the [Erudus System](#) has been supplied by the manufacturers of the products and, whilst the owners of the Erudus System take steps to ensure the information is regularly updated, they give no warranty and no guarantee that the information is accurate. Product information and ingredients may change, please always read product labels carefully in addition to using the information provided by Erudus One.

We do not accept liability for any inaccuracies or incorrect information contained on this site. Please visit <http://www.erudus.com/terms-and-conditions> for full terms and conditions.

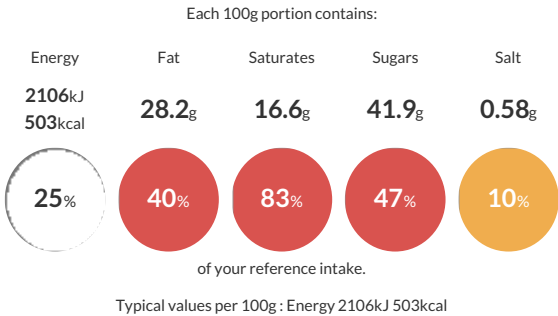
TIRAMISU SLICE (1 x 12 ptn)

Short Product Name:
TIRAMISU SLICE

A sticky coffee flavour caramel sandwiched between a cocoa shortcake base and cocoa dusted white chocolate.

Traded Unit GTIN: 5060044076374 Internal GTIN: Supplier : The Handmade Cake Co. Suppliers Product Code : 076374

Reference Intake



Nutritional Information

Typical Values	Per 100g
Energy	2106kJ 503kCal
Carbohydrates	57.5g
of which sugars	41.9g
Fat	28.2g
of which saturates	16.6g
Fibre	1g
Protein	4.6g
Salt	0.58g

Allergy Information

Key: Contains May Contain


Contains
Cereal/Gluten


Contains
Milk


May Contain
Eggs


Does Not
Contain
Peanuts


May Contain
Nuts


Does Not
Contain
Crustaceans


Does Not
Contain
Mustard


Does Not
Contain
Fish


Does Not
Contain
Lupin


Does Not
Contain
Sesame


Does Not
Contain
Celery


Contains
Soya


Does Not
Contain
Molluscs


Does Not
Contain
Sulphur
Dioxide

Dietary Information

Key: Suitable for


Suitable for
Vegetarian


May not be
suitable for
Vegan


May not be
suitable for
Kosher


May not be
suitable for
Halal


May not be
suitable for
Coeliac

Allergen Statement
For allergens, including cereals containing gluten, see ingredients in **BOLD**. This product may contain traces of nuts and eggs as it has been made in a bakery that uses these ingredients

Ingredients

Shortcake Base (42%) **WHEAT** Flour (with Calcium Carbonate, Iron, Niacin, Thiamin), Sugar, Butter (**MILK**), Vegetable Margarine [Palm and Rapeseed Oil, Water, Salt, Emulsifier (E471), Natural Flavouring], Cornflour, Fat Reduced Cocoa Powder (2.6%), Coffee Caramel (42%) [Sweetened Condensed **MILK**, Butter (**MILK**), Sugar, Golden Syrup, Coffee Flavouring (0.8%)], White Chocolate (15%) [Sugar, Cocoa Butter, Whole **MILK** Powder, Skimmed **MILK** Powder, Emulsifier (**SOYA** Lecithin), Natural Vanilla Flavouring], Fat Reduced Cocoa Powder (0.2%)