

The information on the [Erudus System](#) has been supplied by the manufacturers of the products and, whilst the owners of the Erudus System take steps to ensure the information is regularly updated, they give no warranty and no guarantee that the information is accurate. Product information and ingredients may change, please always read product labels carefully in addition to using the information provided by Erudus One.

We do not accept liability for any inaccuracies or incorrect information contained on this site. Please visit <http://www.erudus.com/terms-and-conditions> for full terms and conditions.

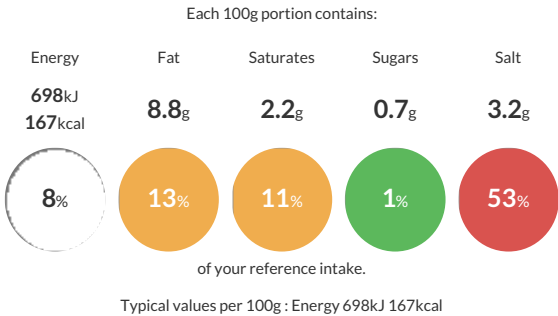
## Smoked salmon long sliced pack 454 g

Short Product Name:  
Smoked Salmon Long sliced

Smoked salmon long sliced pack 454 g presented on a gold board and vacuum packed in a Campbell & Neil bag

Traded Unit GTIN: **5021922000744** Internal GTIN: **5021922000744** Supplier : **Severn and Wye Smokery Ltd** Suppliers Product Code : **SSL454CN**

### Reference Intake



### Nutritional Information

Typical Values	Per 100g
Energy	698kJ 167kCal
Carbohydrates	5.2g
of which sugars	0.7g
Fat	8.8g
of which saturates	2.2g
Fibre	<0.5g
Protein	20.1g
Salt	3.2g

### Allergy Information

Key: **Contains** **May Contain**

  
Does Not Contain Cereal/Gluten

  
Does Not Contain Milk

  
Does Not Contain Eggs

  
Does Not Contain Peanuts

  
Does Not Contain Nuts

  
Does Not Contain Crustaceans

  
Does Not Contain Mustard

  
Contains Fish

  
Does Not Contain Lupin

  
Does Not Contain Sesame

  
Does Not Contain Celery


  
Does Not Contain Soya


  
Does Not Contain Molluscs


  
Does Not Contain Sulphur Dioxide


### Dietary Information


Key: **Suitable for**

  
May not be suitable for Vegetarian

  
May not be suitable for Vegan

  
Suitable for Kosher

  
May not be suitable for Halal

  
NO DATA for Coeliac

Allergen Statement  
Allergens in the ingredients list are shown in Bold

### Ingredients

Salmon (Salmo salar) (**FISH**) (96%), salt, sugar