

The information on the [Erudus System](#) has been supplied by the manufacturers of the products and, whilst the owners of the Erudus System take steps to ensure the information is regularly updated, they give no warranty and no guarantee that the information is accurate. Product information and ingredients may change, please always read product labels carefully in addition to using the information provided by Erudus One.

We do not accept liability for any inaccuracies or incorrect information contained on this site. Please visit <http://www.erudus.com/terms-and-conditions> for full terms and conditions.

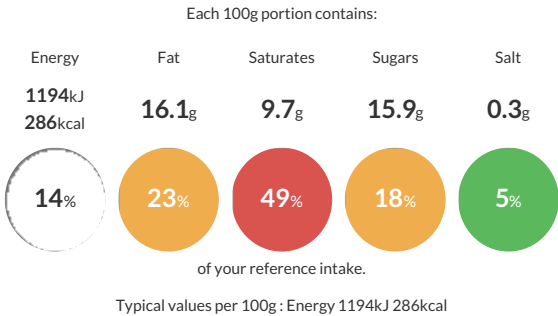
Mini Strawb & Cream Scones 26g (1 x 48)

Short Product Name:
Mini Strawb & Cream Scones 26g (1 x 48)

Light scone bases topped with strawberry jam, a rosette of fresh double cream and finished with a slice of strawberry. (1 x 48)

Traded Unit GTIN: **5060089681533** Internal GTIN: Supplier: **Central Foods Group Limited** Suppliers Product Code: **FDCAN45**

Reference Intake




Nutritional Information

Typical Values	Per 100g
Energy	1194kJ 286kCal
Carbohydrates	31.1g
of which sugars	15.9g
Fat	16.1g
of which saturates	9.7g
Fibre	1.4g
Protein	3.9g
Salt	0.3g

Allergy Information

Key: **Contains** **May Contain**


Contains Cereal/Gluten



Contains Milk


Contains Eggs


Does Not Contain Peanuts


Does Not Contain Nuts


Does Not Contain Crustaceans


Does Not Contain Mustard


Does Not Contain Fish


Does Not Contain Lupin


Does Not Contain Sesame


Does Not Contain Celery


Does Not Contain Soya


Does Not Contain Molluscs


Does Not Contain Sulphur Dioxide

Dietary Information

Key: **Suitable for**


Suitable for Vegetarian


May not be suitable for Vegan


May not be suitable for Kosher


May not be suitable for Halal


NO DATA for Coeliac

Ingredients

Scone (Fortified Self-Raising Flour (**WHEAT** Flour (with Calcium, Iron, Niacin, Thiamin)), Raising Agents (Sodium Carbonates, Calcium Phosphates), Water, Whole **EGG**, Salted Butter (**MILK**), Caster Sugar, Double Cream (**MILK**), Rapeseed Oil, Whole **MILK** Powder), Whipped Cream (Double Cream (24%) (**MILK**), Caster Sugar), Strawberry Sauce (Strawberries (14%), Caster Sugar, Modified Maize Starch, Acidity Regulator (Citric Acid)), Strawberry Slice (8%).